

SENIORS

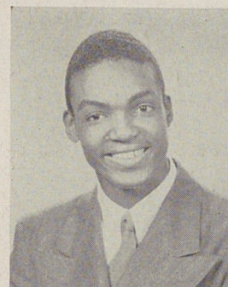
BAKER, JAMES

"A quiet well-dressed fellow who will surely make a name for himself. Keep trying, Jimmie. We're behind you. A snappy dresser and plenty good-looking besides."

BAKER, RUTH

Y-Teens.

"A bit on the quiet side but she has a sweet smile. A conscientious worker. Has lots of friends."



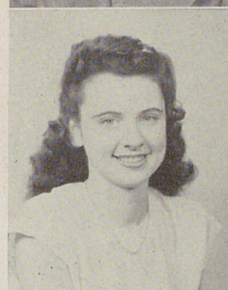
BALLOU, ALMA

"She's quiet but sweet. The possessor of a shy, infectious smile. Although she doesn't say much she is a woman of action. And how she loves to dance."

BANKS, LILLIAN

G. A. A., Glee Club.

"Slender, tender (?), and tall. Very good in sports. A good student too. Lillian has numerous friends, both boys and girls."



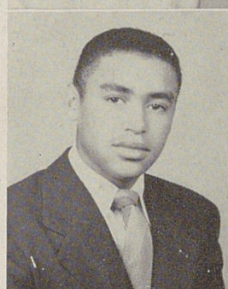
BARNES, WILLIAM

"William is another 'Van Johnson'. He says it's not his fault! Now really, William! We know you are very friendly to all. Is that the reason for such popularity?"

BARNETT, RAMONA

Tumbling, Cheerleader, American Problems, Bulldog Staff.

"Has a pleasing personality which explains her many friends. Popular with both boys and girls. A neat dresser — always has the latest styles. Lovely dark hair."



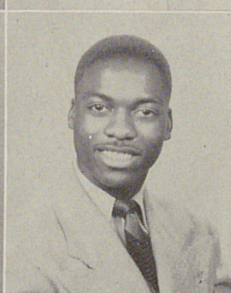
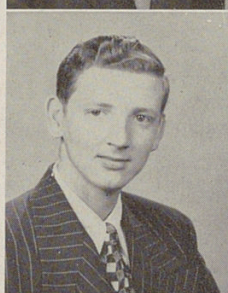
BARRETT, ROBERT

"Bob is a regular fellow. A hard worker. Full of fun and good humor. Hesitates a bit when it comes to girls. We wonder why!"

BATES, HENRY

Glee Club, Band.

"Henry is a very gifted young man for he can really play a piano. We'll be waiting to hear some of your great compositions one of these days, Henry."



BEAM, HELEN

Cheerleader, Old Woodward Honor Club, G. A. A., Woodward Boosters.

"A gorgeous dark-haired beauty. We call her the Jennifer Jones of Woodward. Don't you agree? Also an excellent student. Her one and only is Howard Bellamah."

BERNARD, IMOGENE

Co-op.

"A swell girl with oodles of personality. Well liked by all. She has beautiful long curly hair. Where is 'Andy', Imogene?"

