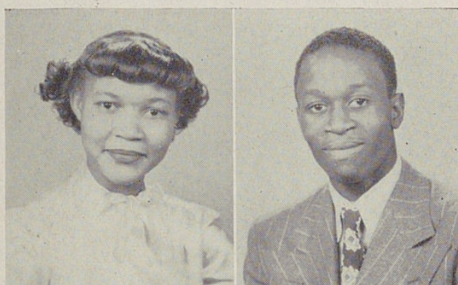
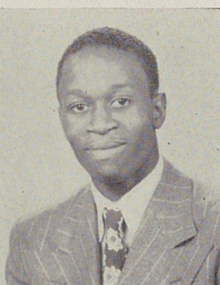


# SENIORS



BLACK, ANNA MAE

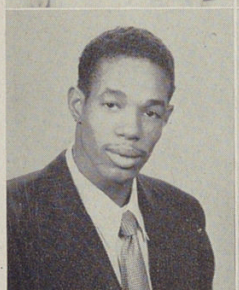
G. S. W., Glee Club, Y-Teens.  
*"A charming and graceful girl. Another of our slender, tender (?), and tall chicks. Has a sweet smile. Liked by everyone."*



BLACKWELL (AUSTIN), JOHN

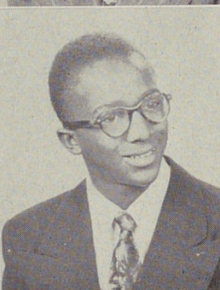
Camera Club, Visual Aids, Glee Club, Hi-Y.

*"A sharp dresser. John is liked by all, especially a certain girl. Because he is so handsome and manly? Well, maybe. He's a swell fellow."*



BLANKS, JOHN

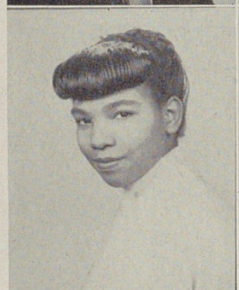
*"Johnnie is a very good athlete. The fastest in Woodward. Don't out-run that V-2 rocket, Johnnie! A nifty dresser."*



BOWEN, WILLIAM

Hi-Y.

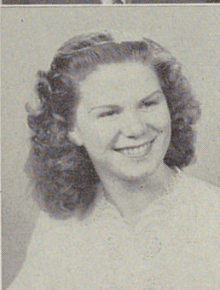
*"A well-dressed fellow and very pleasing to look at. So the girls say! He has an uncanny way of interesting the fairer sex without very much effort. Don't take it too hard, Bill!"*



BOWMAN, GLORIA

Tap Dancing, Glee Club, Physiology Club.

*"Gloria is a jolly girl who keeps a conversation lively. You almost always see her wearing a smile. She loves to sing, and her favorite sport is basketball."*



BRADY, PAT

Old Woodward Honor Club, Y-Teens, American Problems, Cheerleader.

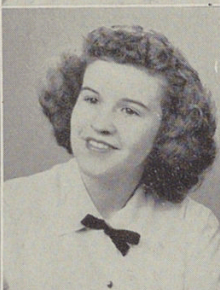
*"Hold your sides when Pat's around! She has a joke for every occasion. Don't call her 'Red' if you value your life, and by all means beware of her smile, 'cause once you see it you're in her power."*



BRAY, DOROTHY LEE

Biology Club, Y-Teens.

*"Hubba, hubba! Dot's a swell girl to know, boys. She's so refined and lady-like! She knows some good jokes too!"*



BREEN, CLARA

Shorthand Club, Co-op.

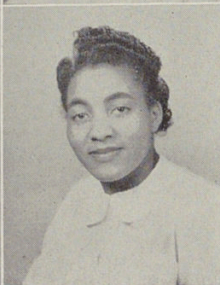
*"A very bright girl, works hard and her grades will prove it. An outstanding girl of Commercial. Has many friends."*



BREVARD, RUTH

Y-Teens, Stage Crafters, Glee Club.

*"Quite the popular girl with both boys and girls. Has a merry laugh, quiet manner, and a nice personality."*



BRINSON, MARGARET

Choir.

*"Never without a smile. Always ready to lend a helping hand. A sweet and charming girl."*