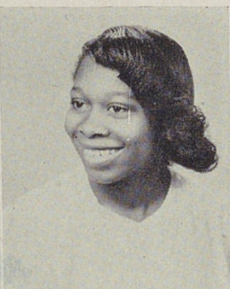


SENIORS



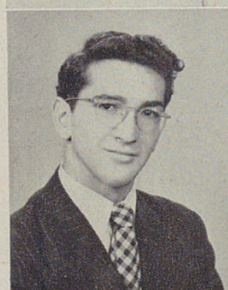
CANADA, GENTRY

"You may not know Gentry very well, but she gets around. Why go outside of Woodward for boys, Gentry? A little birdie told us all about your love life!"



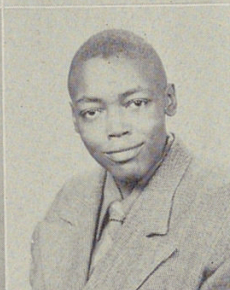
CARR, MARGARET

Glee Club, Choir.
"Caldonia' Carr is a swell friend and a lovable pal. Swoon, fellows, she's a routin' tootin' sing-in' gal."



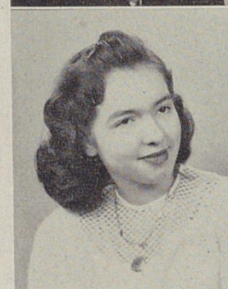
CARUSONE, TONY

American Problems.
"Tony is one of Woodward's best dressed young men. A gentleman in every sense of the word. A swell guy and a willing worker."



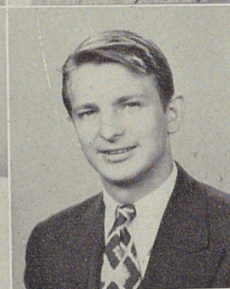
CHANDLER, WILLIAM

"The tall type. The girls go for height — but William is the shy type. But he's friendly. A swell fellow."



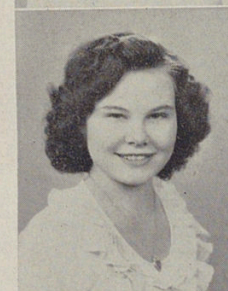
CHESHER, CAROLYN

Latin Club, Physiology Club.
"Her quiet manner hides her pleasant personality. Doesn't have a lot to say but she is liked by all her friends and friends she has many."



CLICK, VIRGIL

Band.
"Seems to be shy but if you know him, look out. Has a keen sense of humor. Conserves his energy during school hours but can he give later!"



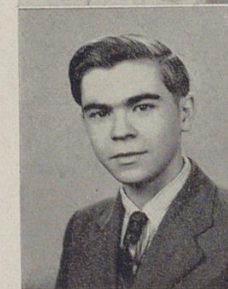
COMBS, DOLORES M.

Old Woodward Honor Club, G. A. A., Tap Dancing, Visual Aids.
"A sincere friend. Worth getting to know. A hard worker. Has two mighty cute dimples when she smiles that shy smile of hers."



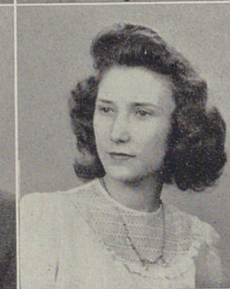
CONE, PATRICIA ANN

Co-op.
"Quiet, but friendly. Always has a smile for everyone. Especially for a certain — well you know him as well as we do!"



COVERT, JAMES

"His quiet manner hides his friendly spirit. A dependable and hard worker. A true friend and likeable chap."



CRUTCHER, BETTY

Co-op.
"A very nice girl, always well dressed. Pleasant and courteous at all times. Works hard to succeed and she will."