

# SENIORS

FERDON, MAE AILEEN

Co-op.

"Very nice. Has lovely hair and a smile for everyone. Sweet and charming."

FERGUSON, ERNESTINE

Y-Teens, Glee Club.

"A sweet little girl. Very attractive and neat. Jimmie thinks she's wonderful, and so do we!"



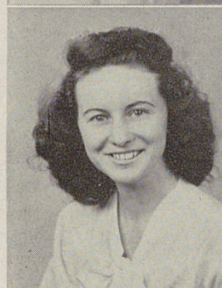
FERGUSON, WILA

"Wila is shy and timid among strangers, but quite the gay one among her friends. She is popular with all who know her because of her gracious manner."

FLACK, NANNIE

Glee Club.

"A quiet girl with a quiet smile — comes slowly but worth waiting for. Has many friends."



FLAGG, JOHNNY

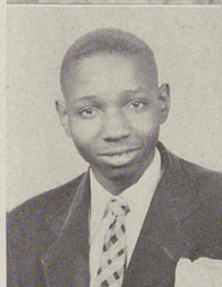
Band.

"A very quiet fellow — at times, but as most other fellows, he likes the girls. Don't let them run your life, Johnny. As if there's a chance!"

FLORIMONTE, LOUISE

Co-op.

"A wonderful friend. Is very generous toward everyone. Always ready and willing to do her share."



FOGEL, LLOYD

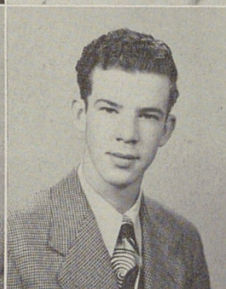
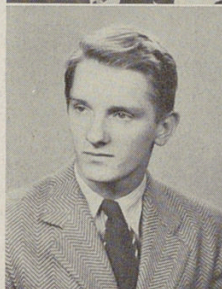
Old Woodward Honor Club, Baseball, Hi-Y, Visual Aids.

"His friends call him 'Lefty'. Minds his own business. Has a friendly smile for everyone. Quiet around school but does his work in good style."

FRITSCH, WILLIAM

Stagehands.

"The quiet type. Doesn't care much for the girls. Gets along very nicely with the fellows. A good student and hard worker. He'll succeed."



FUGATE, BARBARA

Old Woodward Honor Club, Savings Stamps Cashier, Co-op, Glee Club.

"Seems quiet but is definitely friendly. Knows how to gain friends and keep them. A very fine student."

GALLO, ROSEMARY

Co-op.

"A fine person to know. Always has a smile for everyone. She has a winning personality and she gets along with everyone."

