

SENIORS

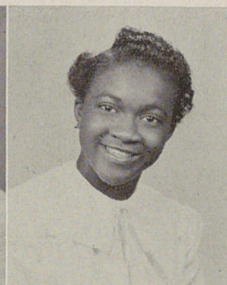
GILREATH, MARY JANE

Y. C. C.

"A friendly person with loads of friends. Easy to get along with and nice to know. Lots of fun."

GLANTON, NORMA

"A nice girl. A snappy dresser. Has a smile for everyone. Has many friends and knows how to keep them."



GORE, RUFUS

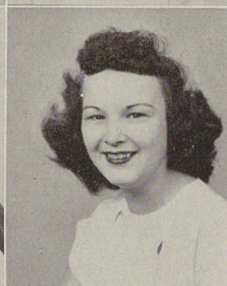
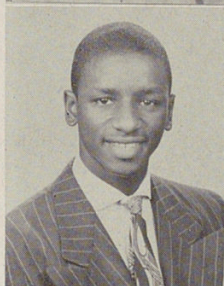
Band.

"Another of Woodward's 'Romeos'. He is also a wonderful musician. Keep it up, Rufus, you may become famous one of these days."

GOSEY, MARILYN

Y. C. C., Tumbling, G. A. A., Band.

"Marilyn is one of our gay and lively members. She is an active participant in sports of all kinds. Liked by boys and girls."



GRAY, EUGENIA

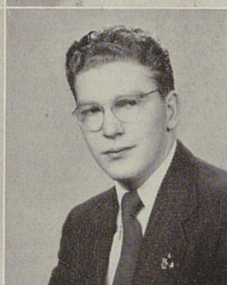
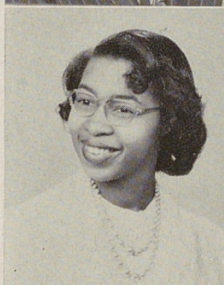
Y-Teens, G. A. A., Co-op.

"Small, nice and a little on the quiet side. But you're always sure of fun when you're with Eugenia. A good student."

GREEN, BILL

Band, Choir, Student Council, Visual Aids.

"Bill is one of the jokers of the Senior Class. Has his trouble with chemistry. Watch out, girls, he is also a wolf. A swell guy and lots of fun."



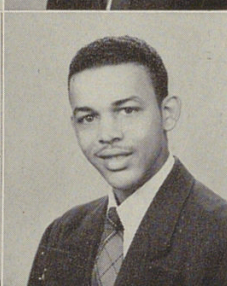
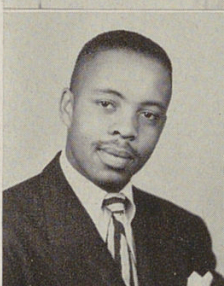
GREEN, CHARLES

Football, Glee Club, American Problems.

"A very attentive student. Don't let the girls get you down, Charlie. He was a great asset to Woodward's football team."

GRIFFIN, LOVE

"A very popular senior — with the boys anyway! Maybe the same goes for the girls too! Is that right, Love? A nice fellow."



GROB, MARTHA

Y-Teens, American Problems, Tap Dancing.

"One of Woodward's happy-go-lucky girls. She has a personality you just can't beat. Has loads of fun in school and out. Some lucky boss will get a wonderful secretary — or Eugene a wonderful wife!"

GRUBER, MATTHEW

Stagehands, Hi-Y.

"Tall and handsome. A snappy dresser. The boys sure envy his wavy hair. Good pal to all the boys. A whiz in all his subjects. A dependable fellow."

