

SENIORS

LEWIS, ELLA MAE

Physiology Club, Glee Club.
"A quiet girl but friendly. Takes life easy. Is quite scientific. A neat dresser. Liked by everyone."

LEWIS, GLORIA

"Has a smile for everyone, a sweet low voice with a Spanish accent, and besides, she's very pretty. An unbeatable combination."



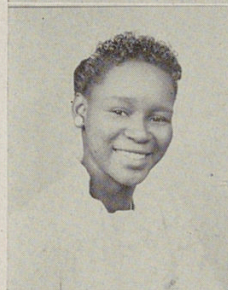
LEWIS, JOYCE

"Like Gloria, she has a Spanish accent and a smile for everyone. Quiet, but nice to know."

LEWIS, MAUDE

Y-Teens, Student Council, Physiology Club.

"Slow but sure. That's 'Sweet Maudie' Lewis. And she looks as sweet as she is."



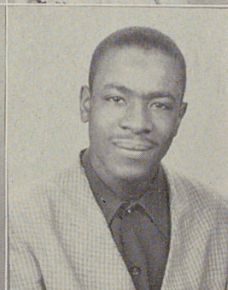
LIEBERMAN, RUTH

Co-op, Glee Club, Choir.
"Always has a smile for everyone. Nice hair and a nice voice. Dependable and friendly."

LOVELESS, THOMAS

Biology Club.

"'Loveless' in name only. Get proof positive from a number of girls. A swell fellow to know."



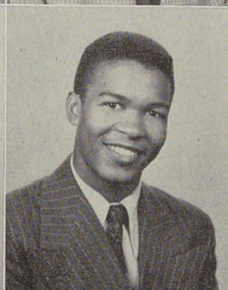
LOWERY, SALLIE

Lunchroom Squad, Y-Teens.
"A quiet girl with every good and likeable quality. Better get acquainted, fellows!"

LYNN, JOE

Hi-Y, Choir.

"Another of Woodward's great lovers. Now who said that! A fine fellow. Always willing to help."



MALLALEY, ARDELL

Co-op.
"Tall, dark, and lovely. The model type, and that's just what she is. 'Oui, oui' is her answer to her Frenchman's letters!"

MARKARIAN, ROSE

Co-op.

"A quiet girl, but her personality speaks for her. Has many friends and will have no trouble keeping them."

