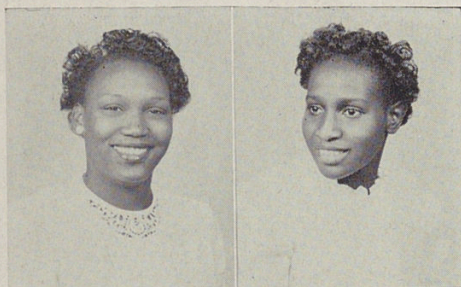


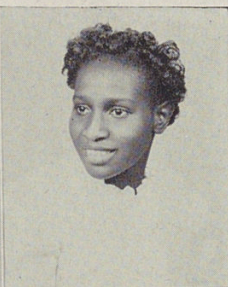
SENIORS



POWELL, JUANITA

American Problems, Glee Club, Choir, Y-Teens.

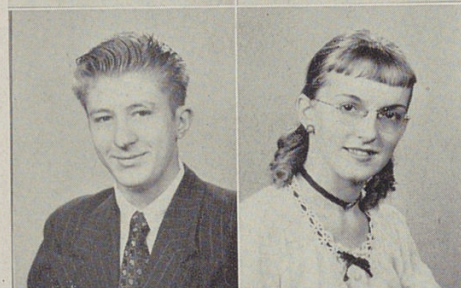
"A nice girl. Keeps us laughing in Office Practice. A dependable and neat worker. Liked by everyone."



PRINGLE, BETTY LOU

Y-Teens, Visual Aids, Camera Club, Glee Club.

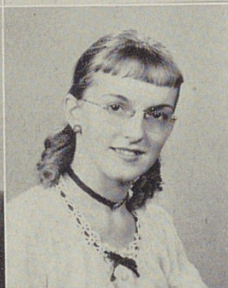
"A bundle of energy. Betty is 'on the ball'. She and Pat are inseparable. She's an all right girl."



PROPHETER, JOHN

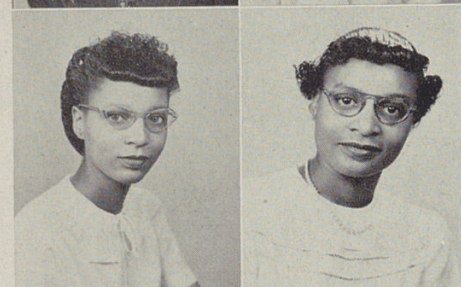
American Problems.

"His antics keep the students in stitches. They also give the teacher gray hair! His favorite quotation is 'My pop says—'."



PUNTAN, HAZEL

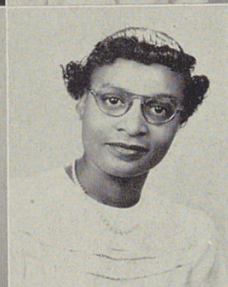
"Another of Woodward's blondes. She has many friends and likes to have a good time. She may become a famous artist some day. Good luck, Hazel."



RABB, ADA MAE

Physiology Club, Y-Teens, Stage Crafters.

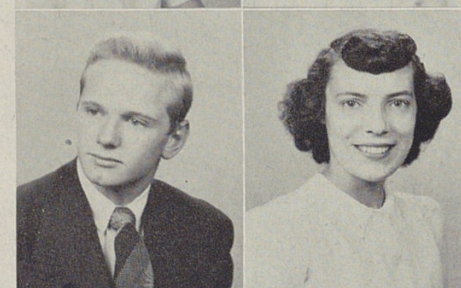
"Slender and tall. Always has a bright smile. She is always cheerful and friendly."



RAPER, MARGARET

Y-Teens.

"Very popular, and it's no wonder. She's charming and gracious. Very attractive and a regular fashion plate."



REDD, BRUCE

Football, Lunchroom Squad, Old Woodward Honor Club, Bulldog Staff.

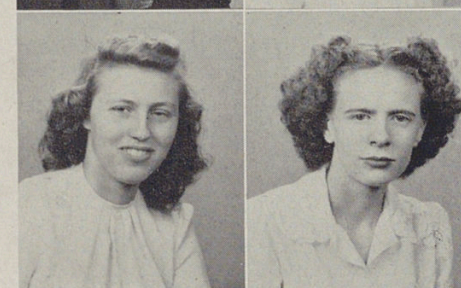
"Shy but nice. Makes friends easily. A hard worker, and a sport in all sense of the word!"



RIDENER, STELLA

Choir, Annual Staff, Y-Teens, Glee Club.

"Whenever you're feeling blue, you can always depend upon Stella to cheer you up. She is very gay and fun-loving, and liked by everyone for her sweet, unspoiled manner. Her favorite pastime is jitter-bugging."



RIESENBERG, MARIAN

Co-op, Shorthand Club.

"Cute and blonde. Loves—and tells—good jokes. A true friend. Is never seen without Mary Ellen."



RILEY, IRENE

Choir.

"Irene is a great friend of both teachers and students. Those who know her best know that she is a gay and cheerful person, and a willing worker."