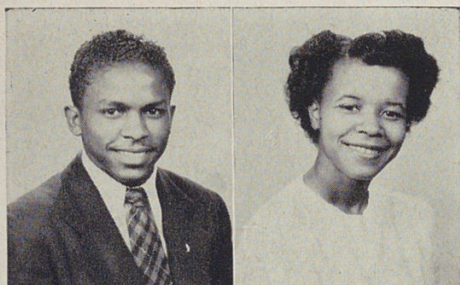


SENIORS



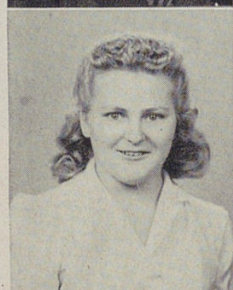
SANDERS, COY

Band, Hi-Y.
"The 'Romeo' type. He can always win with the ladies. Maybe it's because he's an expert dancer. He is rather handsome though, girls, don't you think?"



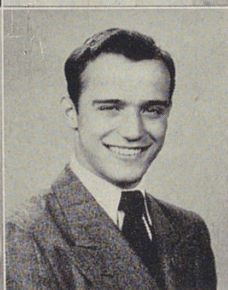
SCHAEFER, BETTY JEAN

American Problems, Tap Dancing, Y-Teens.
"A small attractive girl who is interested in a variety of activities. She is always ready with a smile and really seems to be enjoying every minute of school and otherwise."



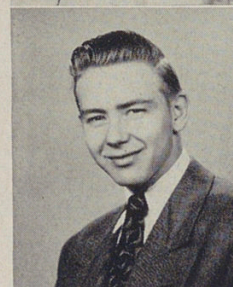
SCHEIDT, MILDRED

G.A.A., Co-op.
"A nice girl. A little on the quiet side but that does not keep her from having many friends. A fine student."



SCHOOLEY, DEMUS N.

Football Team-Captain, Old Woodward Honor Club, Student Council-President, Stage Manager.
"Very friendly and a good dresser. A hard worker and very dependable. Has a smile for everyone. The Greeks have a word for it!"



SCHROEDEL, HENRY

Baseball, Basketball, "W" Club, Football Manager.
"'Hank' or 'Jimmy' is one of Woodward's best liked boys. Always has a smile. A good guy—a swell fellow."



SCHROEDER, MARJORIE

Co-op, Shorthand Club, Tap Dancing.
"Oh, that red hair. The color doesn't act as a stop-light for the boys though! Has a pleasing personality."



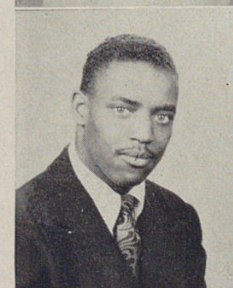
SCHULZE, DOLORES

Glee Club, Typing Club.
"Quiet, but these quiet girls are usually good students and Dolores is no exception. Pleasant manner and swell girl. Likes to go to football games."



SHARPE, MARIE

G.A.A., Y-Teens, Stage Crafters.
"She has popularity plus and friends galore, both boys and girls. A sweet smile is one of her major assets. She is active in many clubs and loves to have fun."



SIMS, CLARENCE

Biology Club.
"A quiet fellow at times, but he almost goes into convulsions when the name of a certain girl is mentioned. You know whom we mean, don't you, old boy?"



SLAUGHTER, VIVIAN

Y-Teens.
"A quiet girl, but friendly as they come. Always has a ready smile. Nice dresser."