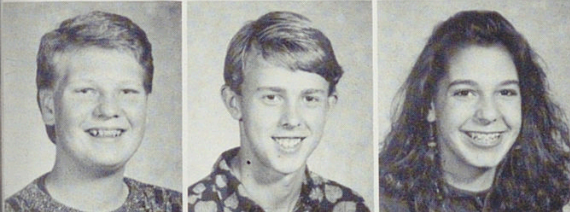


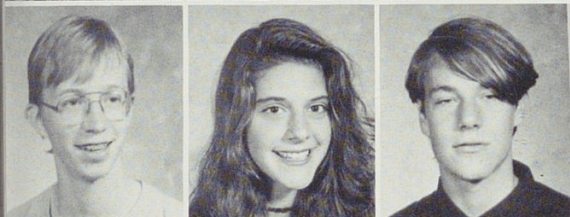
SOPHOMORES SOPHOMORES



Randi Levy
Justin Leyda
Michele Lichtenberger



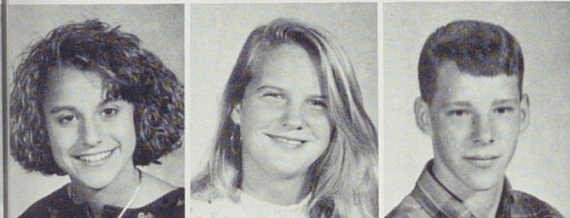
Paul Liebat
Bryan Life
Sara Linder



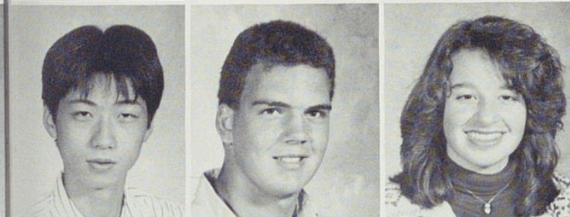
Keith Lindgren
Alissa Lipson
Christopher Lockey



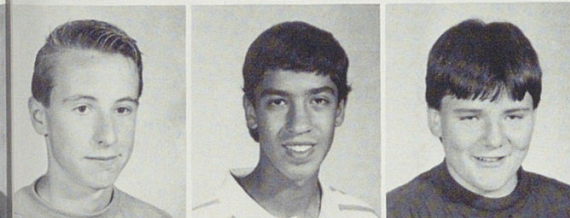
Ryan Mecum
Danneen Long
Tom Lucas



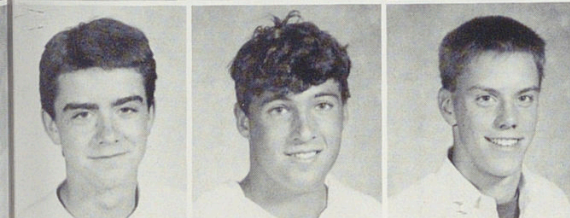
Andrea Lucke
Emily C. Lutterbei
Marc Madama



Hiroki Maeda
Scott Magilefsky
Christine Mallette



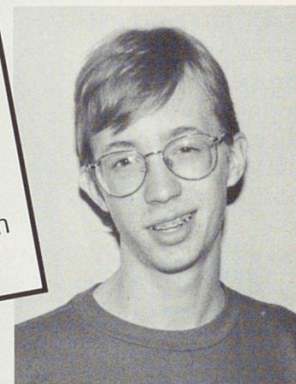
Clifton L. Mandola
Sheref S. Mansy
Thomas J. Marquardt



Casey Marquette
Scott E. Marshall
Jeremy K. Martin

How do you like
the new library?

It has the same
books as last year
so what difference
does a few
windows make?
-Keith Lindgren



I wonder if you
need to be put on
parole to get out of
there.
-Jim Duncan



I think the money
should have been
spent in a more
useful way.
-Erin
Cunningham

