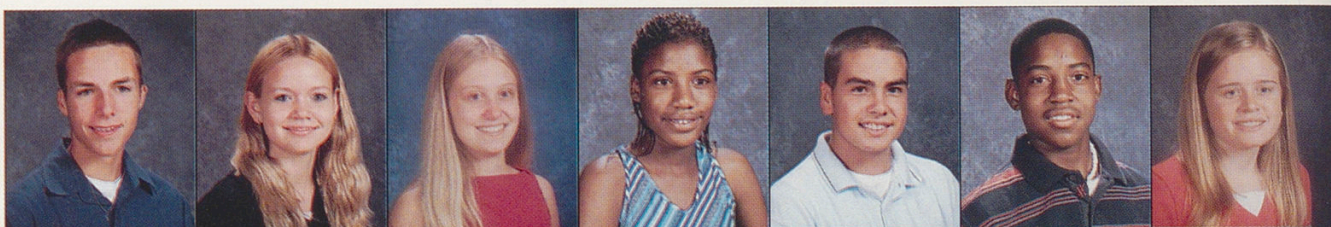
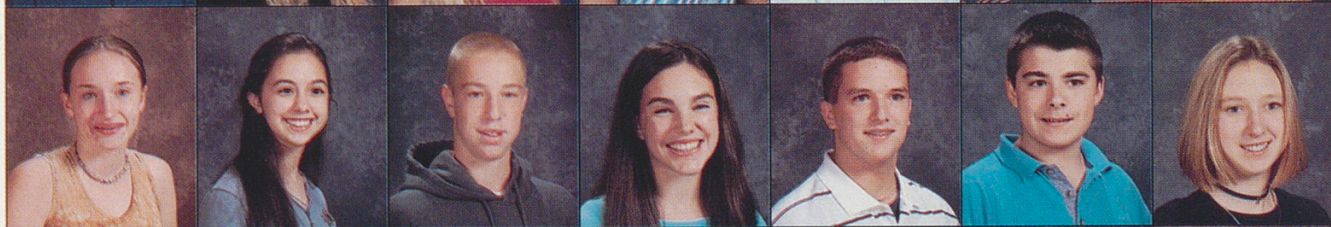


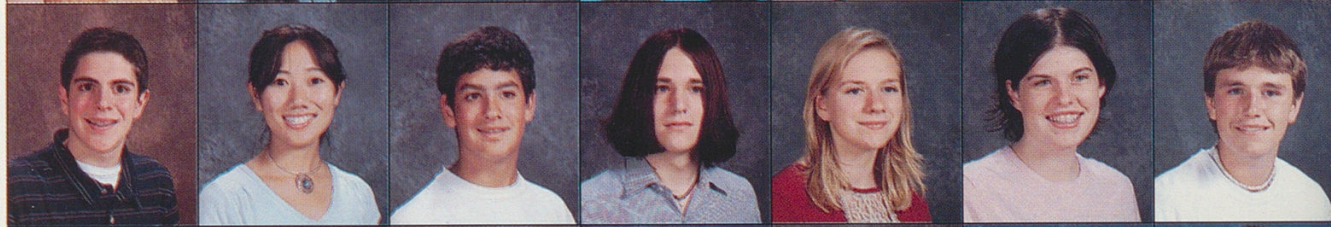
Andrew Johnson
Carrie Johnson
Kimberly Johnson
Valencia Johnson
Curtis Jones
Erron Jones
Lauren Jones



Blaine Jordan
Kavita Joshi
Todd Juran
Rachel Kadetz
James Kagrise
Anthony Kalberg
Elena Kalinichenko



Samuel Kanter
Carol Kao
Matthew Kartal
Michael Kash
Rachael Kauffung
Anna Kaufman
Ryan Keller



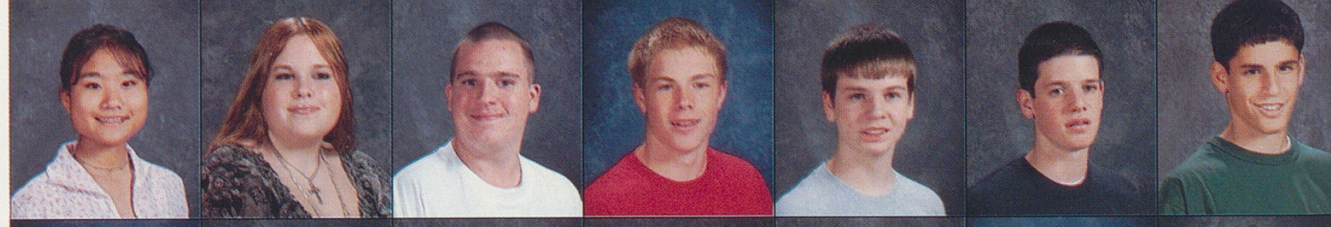
Nathaniel Kennedy
Laura Keough
Janine Key
Lauren Kilburn
Samuel Kim
Brittany Kimbrell
Michael Kimmey



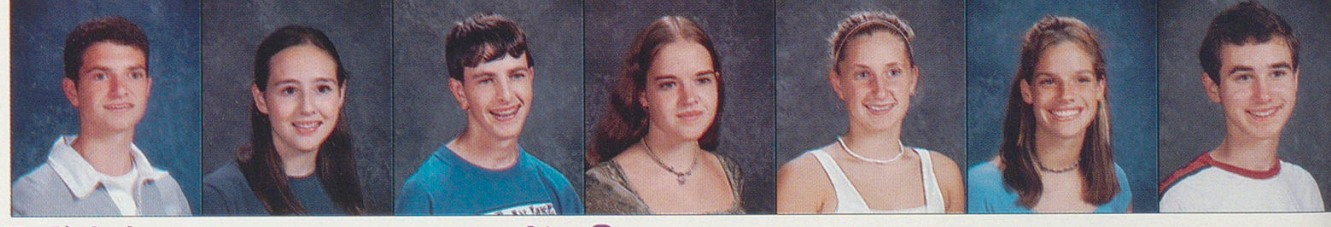
Ashley Kindberg
Tiara King
Robert Kirkpatrick
Amanda Kisor
Melanie Klein
Robert Knodle
Emily Koegel



Sayuri Kogami
Nikki Koller
Stephen Koller
Steven Koppenhafer
Christopher Korte
Raymond Kowatch
Douglas Kralstein



Steven Kramer
Krystal Kruse
Matthew Kursmark
Allison Lacker
Ariane Lannelongue
Jennifer Latessa
Alton Lee



PDA-What is going too far?

The birds are chirping, the bees are buzzing, but wait a second... keep your paws to yourself.

People are involved in relationships right? Sure, but is it necessary to swap spit in school? Many teachers and students see a major problem with showing an extreme affection in school. Yeah, it's fine for a little peck on the cheek or holding hands in the hallway, but sometimes couples

get out of hand! You might find that this subject has been drug out and beaten to no end, but people are not getting the point. Nobody wants to see that on the way to class. It's not like your not going to see them again, all you have to wait is 50 minutes. For all those love birds out there, cut it out!

Can we put a limit on or punishments for this behavior? This is a hard call on the

administrative staff.

"Students should respect other's right to feel comfortable on the way to class," said **Dr. Keith Kelly**.

Many people feel that it's not a big deal, while others feel this is disgusting. One person's opinion on the matter can be totally different on what is crossing the line. PDA is something that people feel that they either do or don't do. What's going too far for you?

By Katie Hooper

"It's not appropriate in school to be overly embraced. While it is important to treat each other well and show our care without going over the line. If students do, we will intervene."

Dr. Kelly