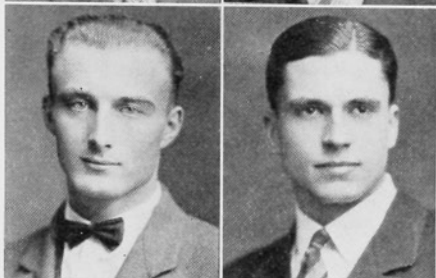


ARTHUR H. SWENSON, M.E.; IXE.
Rockford High School, Rockford, Ill.

Co-op Club; A. S. M. E.; Glee Club 5; Musical Comedy 5.

CLARENCE W. TAYLOR, E.E.
Morton High School, Richmond, Ind.

A. I. E. E., President 5; Co-op Club; Cadet Staff 3, 4, 5.



JOHN THEISS, JR., E.E.
Trenton High School, Trenton, Ohio.

Co-op Club; A. I. E. E.; Rifle Team 2, 3, 4, 5, Captain 5; Y. M. C. A. 5.

GORDON M. THORNDYKE, A.B.
Hughes High School.

Pre-Legal Club 1, 2, 3; Y. M. C. A. 1; Sociology Club 2, 3; Bag and Hammer 3; Blue Hydra 3.



DOROTHY ELIZABETH TODD, A.B.; ΔΔΔ.
Hughes High School.

Y. W. C. A.; W. S. G. A.; Manager Freshman Basketball 1; Basketball Team 1; Sophomore Hop Committee 2; Cincinnati 2; Liberal Arts Cabinet 3; Pan-Hellenic Delegate 3; Student Assistant in Psychology 3, 4.

GEORGE C. TOEPFER, Com. E.; ΣΦΗ, ΔΣΠ, Scabbard and Blade.
Hughes High School.

Commerce Club; Co-op Club; Y. M. C. A.; R. O. T. C. Shield 2, 3, 4.



MARY LOUISE TRACY, Diploma in Nursing.
Bridgeport High School, Bridgeport, Ill.

SYLVIA BOND TRENT, Diploma in Nursing.
Pikeville College Academy, Pikeville, Ky.

Secretary-Treasurer, Junior Class 1; School Council 2; Melody Club 3.



LAWRENCE ELMER TURTON, B.S.; ΣΧ, ΝΞΝ.
Lebanon High School, Lebanon, Ohio.

Treasurer Sophomore Medical Class 2; Student Instructor in Anatomy 2; University News 3.

CLARK A. VALENTINER, Com. E.; ΒΘΠ, Ulex, "C."
Norwood High School, Norwood, Ohio.

Freshman Football 1; Football 2, 3, 4; Basketball 1, 2, 3, 4; Commerce Club; Co-op Club; Baseball 2, 3, 4; Engineering Tribunal 3.



MARY ELIZABETH VALERIO, B.S.
Woodward High School.

Newman Club; Y. W. C. A. 1; Glee Club 1; Nutrition Club 2, 3, 4.

CHARLES EDWARD VANCE, A.B.; ΑΤΩ, ΦΔΦ.
Hartwell High School.

Pre-Legal Club 1, 2; University News 1, 2; Baseball 1, 2; Vigilance Committee 2; Sophomore Corner Committee 2; Pan-Hellenic Delegate 2, 3, 4, President 4; Chairman Junior Corner Committee 3; Treasurer Senior Class 4.