

Men's Panhellenic Association

OFFICERS

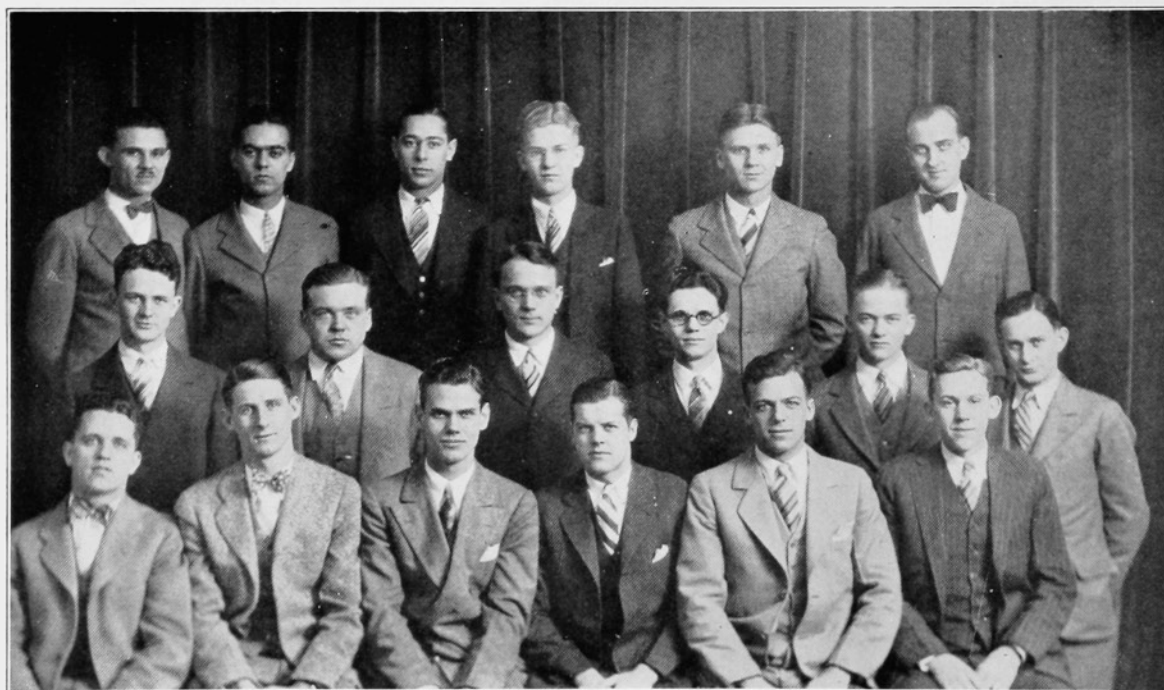
CHARLES E. VANCE.....	President
RUSSELL F. SPEIDEL.....	Vice-President
WILLIAM A. HAMMELRATH.....	Secretary and Treasurer

The Men's Panhellenic Association is an inter-fraternity organization. Its purpose is to maintain a relationship between the members which will be of benefit to them and the University.

The Association is governed by a Council, which is composed of two representatives of each fraternity which has been elected to membership in the organization. The Council enacts legislation governing inter-fraternity relations and has the power to try all cases covered by its regulations.

DELEGATES FROM FRATERNITIES

Russell Speidel	Sigma Chi	John Bachman
Richard Jervis	Sigma Alpha Epsilon	Earl Straud
Albert Mayer	Beta Theta Pi	Harold Edwards
Evan Chatfield	Phi Delta Theta	Thomas Gash
Merritt Farrel	Delta Tau Delta	Frank Shelton
H. V. Hopkins	Pi Kappa Alpha	A. C. Kleine
R. S. Corwin	Lambda Chi Alpha	N. P. Auburn
E. F. Goldmeyer	Alpha Tau Omega	C. E. Vance
W. A. Hammelrath	Triangle	N. J. Bukey



Hopkins	Edwards	Goldmeyer	Auburn	Hammelrath	Corwin
Shelton	Mayer	Bachman	Bukey	Speidel	Gash
Farrel	Straud	Kleine	Vance	Jervis	Chatfield