

Campbell

Knocke

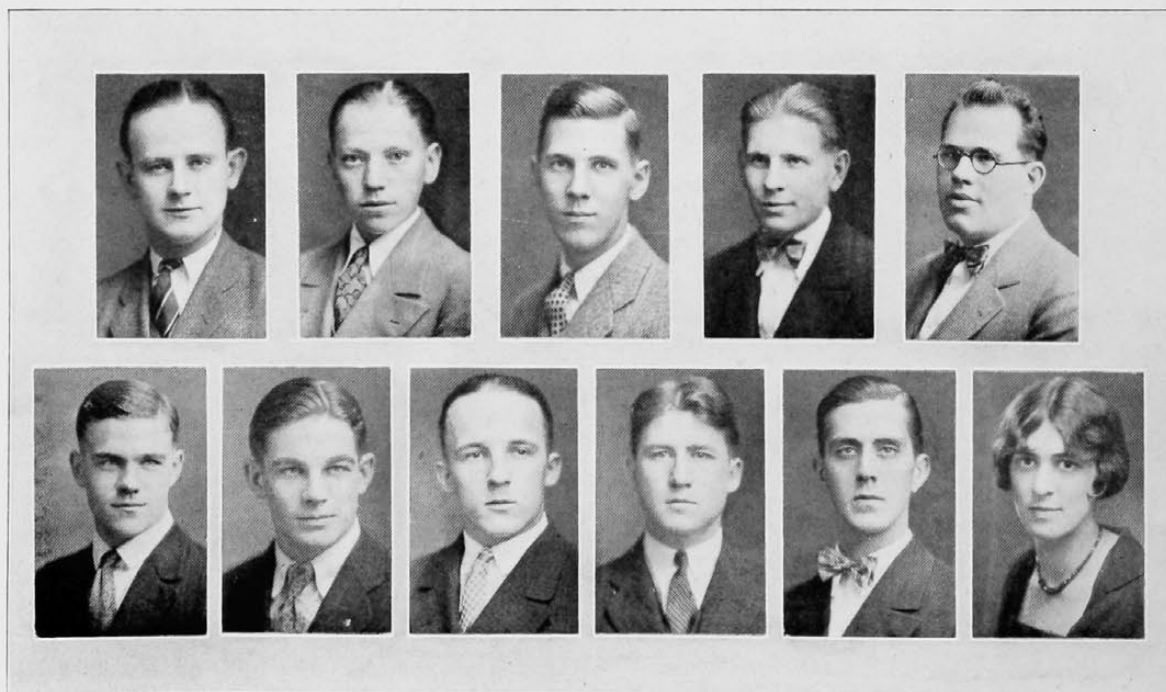
The Co-Operative Engineer

STAFF

JAMES J. CAMPBELL, '28.....	Editor-in-Chief	WALTER M. ANDERSON, '29.....	Secretary
W. E. STILLWELL, JR., '28.....	Managing Editor	OLGA KNOCKE, '29.....	Business Manager
WILLIAM V. ARNOLD, '28.....	Alumni Editor	FRED H. KOCK, '29.....	Art Editor
LAWRENCE L. COFFIN, '28.....	Associate Editor	GEORGE A. HOFFMAN, '28.....	Advertising Manager
LE ROY L. LAMBORN, '29.....	Associate Editor	JOHN D. REINHART.....	Asst. Advertising Manager
G. B. BROSSART, '31.....	Assistant Editor	W. F. BISCHOFF.....	Exchange Manager
SELMA HERMANN, '30.....	Assistant Editor	H. MERKLE.....	Exchange Manager
CARL HEYEL, '31.....	Assistant Editor	PAUL E. HECKEL, '30.....	Circulation
J. E. MIDDLETON, '29.....	Assistant Editor	T. B. REED, '30.....	Assistant Circulation
NANCY GLASCOCK.....		Assistant Circulation	

ADVISERS

PROFESSOR CLYDE W. PARK.....	Editorial	PROFESSOR WALTER A. BAUDE.....	Business
PROFESSOR DANIEL COOK.....	Art		



1—Arnold, Bischoff, Hoffman, Heckle, Anderson. 2—Kock, Johnson, Lamborn, Stillwell, Reed, Hermann.