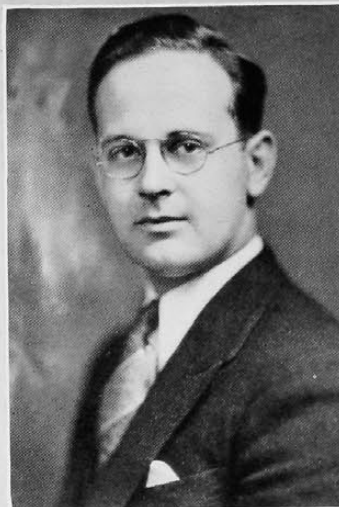




Burman

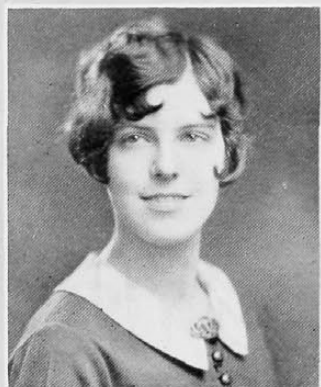


Taylor

## The 1929 Cincinnati

### EXECUTIVE STAFF

Gordon R. Burman	Editor-in-Chief
Frank X. Owens	Associate Editor
William H. Taylor	Business Manager
Joseph H. Kindle	Faculty Adviser
David C. Eckert	Managing Editor of Photography
Dorothy A. Keating	Managing Editor of Copy
Edith M. Wehmann	Managing Editor of Records



Wehmann



Eckert



Keating