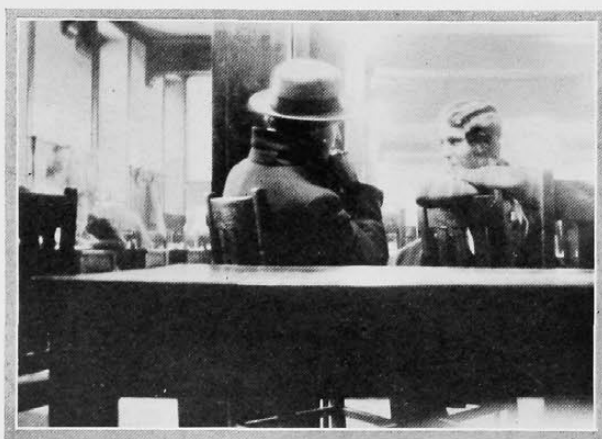
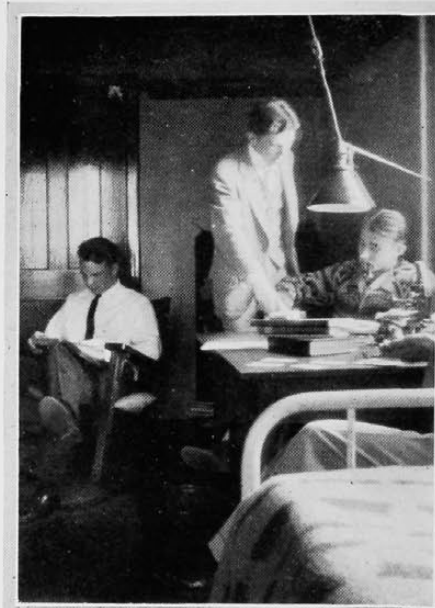


As exam time approaches the Deans of our various colleges like to think that this is what goes on among their respective students. Our staff camera wouldn't think of telling a fib.



But "Basement Joe," with his long years of careful observation, assures us that this depicts the most popular form of concentration. Why deny it?

And the Scholarship Committee of Women's Panhellenic produces this to prove that neither of the previous theories is sufficient to cover the whole situation.

