

## Nu Sigma Nu



Professional Medical Fraternity  
Founded at the University of Michigan, 1882  
37 Chapters  
Local Chapter, established 1892

### ACTIVE MEMBERS

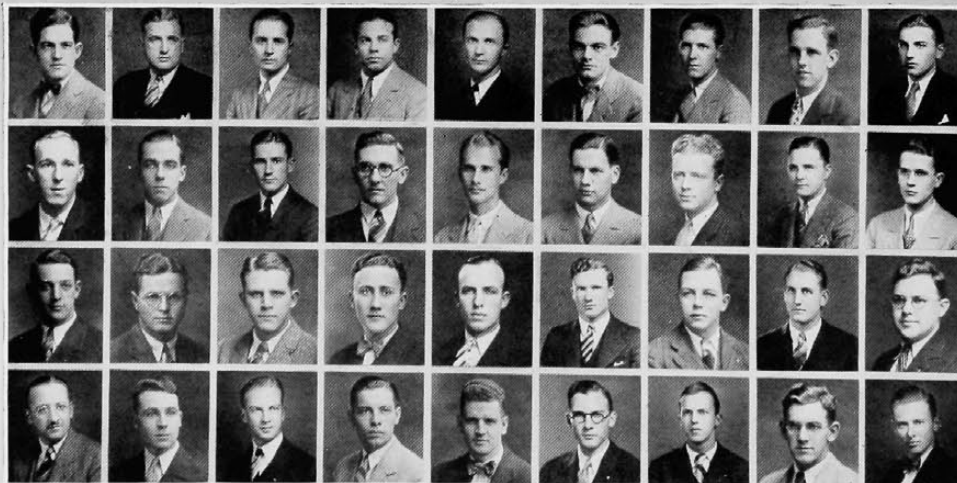
Charles D. Aring, '29  
Samuel Louis Bauer, '29  
Clyde W. Berry, '31  
Richard I. Brashear, '29  
Donald L. Butterfield, '29  
William G. Childress, '29  
George R. Dunlop, '31  
Daniel E. Earley, '31  
Robert B. Ellison, '31  
Howard D. Fabing, '31  
Earl V. Ferguson, '29  
Starr M. Ford, '30  
Charles E. Franklin, '29  
Harry L. Fry, '30

Kenneth G. Gould, '29  
Victor H. Haas, '31  
Charles L. Howard, '31  
Andrew Roger James, '31  
Ralph M. Morgareidge, '30  
Ralph F. Niehaus, '31  
Houston H. Rinehart, '31  
Charles B. Schoolfield, '31  
John F. Taggart, '30  
Robert J. Tapke, '31  
Robert M. Thomas, '29  
M. Morton Van Sandt, '29  
Richard J. Weiskittle, '29

### PLEDGES

Clay Beekley, '32  
Stanley Burkhart, '31  
William Chambers, '32  
Jack Cronin, '32  
Carl Hammerstrom, '32  
Gaston Hannah, '32

Raymond L. Hilsinger, '32  
Glover T. Keen, '32  
Edward McGrath, '32  
Donald R. Nelson, '31  
Arthur Schultz, '32



Brashear, Ferguson, Thomas, Steiner, Childress, Aring, Bauer, Gould, Van Sandt  
Weiskittel, Ford, Early, Taggart, Morgareidge, Fry, Dunlop, Butterfield, Schultz  
Toppe, Howard, Evans, Rinehart, Berry, Ellison, Fabing, Schoolfield, James  
Keen, Burkhart, Chambers, Beekley, Cronin, Hannah, Hilsinger, Hammerstrom, Haas