

Phi Rho Sigma

Professional Medical Fraternity

Founded at Rush Medical College, 1890

33 Chapters

Alpha Theta Chapter, established 1927

MEMBERS IN FACULTY

Dr. D. T. Vail

Dr. N. C. Foot

ACTIVE MEMBERS

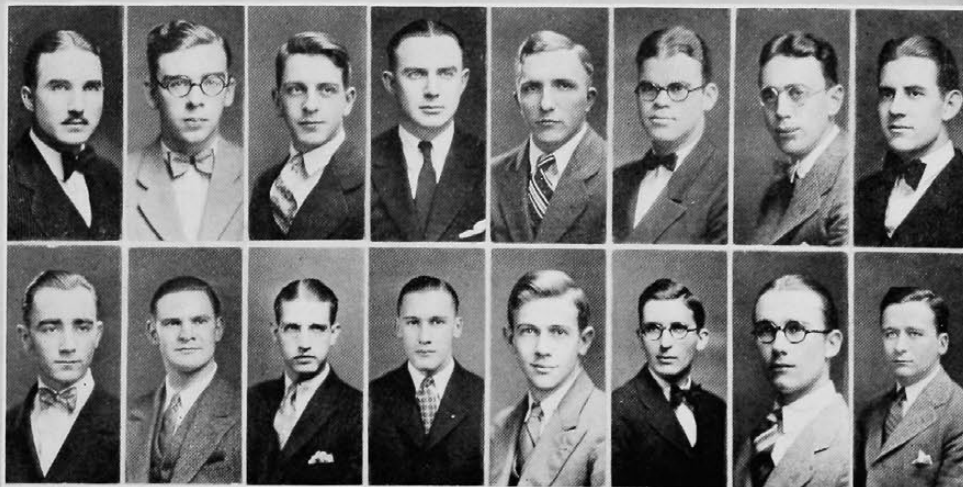
Ernest W. Ekermeier, '30
Harry C. Ernsting, '30
J. Bates Henderson, '29
Russell E. Kinsey, '31
Thomas K. Kirk, '29
Charles W. LeMaster, '30

Don Mathews, '31
Gonner Moss, '29
Gerrit W. Raidt, '30
Edward Studenberg, '31
Sydney Scorse, '31
J. Gay VanDermark, '30

PLEDGES

Earl W. Bailey, '32
C. L. Baker, '32
Harold R. Mayberry, '32

Jean Nock, '32
Ewald Pawsat, '30
Emory Irwin, '32



Matthews	Studenberg	Ernsting	Moss	Ekermeier	Henderson	Irwin	Kinsey
Raidt	Scorse	Bailey	Pawsat	VanDermark	Baker	LeMaster	Kirk