

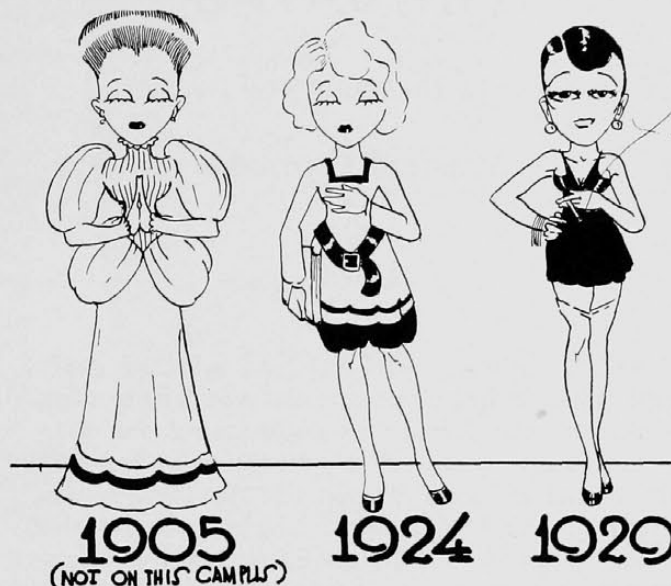
## SOME WORDS ON THE MUCH MOOTED QUESTION OF EVOLUTION

F. SC. F. SC. F. SC. F. SC. F. SC. F. SC.

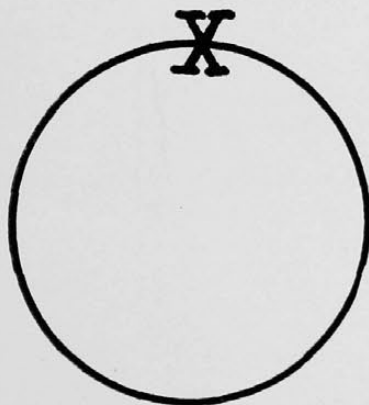


F = FACULTY POWER IN STUDENT GOVERNMENT  
SC = POWER OF STUPID COUNCIL -----

From this chart it can be seen at a glance that there is a radical break in the natural operation of the laws of nature as set forth by Darwin. The homus "Faculty" was deemed in 1927 to be almost an extinct specie; and the homus "Student Council" was known to be waxing in strength. The sudden reversal of conditions in late years is no doubt caused by some rejuvenation in the former specie and condition of softness and unfitness in the latter.



Kappa Kappa Gamma presents a remarkable illustration of the development of what is commonly called "modernism." Perhaps no group of humans resisted this universal youth movement with the grim and tenacious persistence of the Kappas. As recently as 1926, when the order of the day was rolled stockings and no—(censored), every Kappa was still enveloped in some forty or fifty yards of dark, non-transparent bloomers. Today even these hardy conventionalists have succumbed and modernism is everywhere.



The circle represents the cycle of development in varsity athletics. The line depicts the football team and the X shows the point where the team had its beginning some years ago. The second X represents the point of progress that football has reached on this campus today. The second X is a trifle hard to distinguish owing to the fact that it is directly under the first X.