

# 1930

## Liberal Arts Tribunal

### OFFICERS

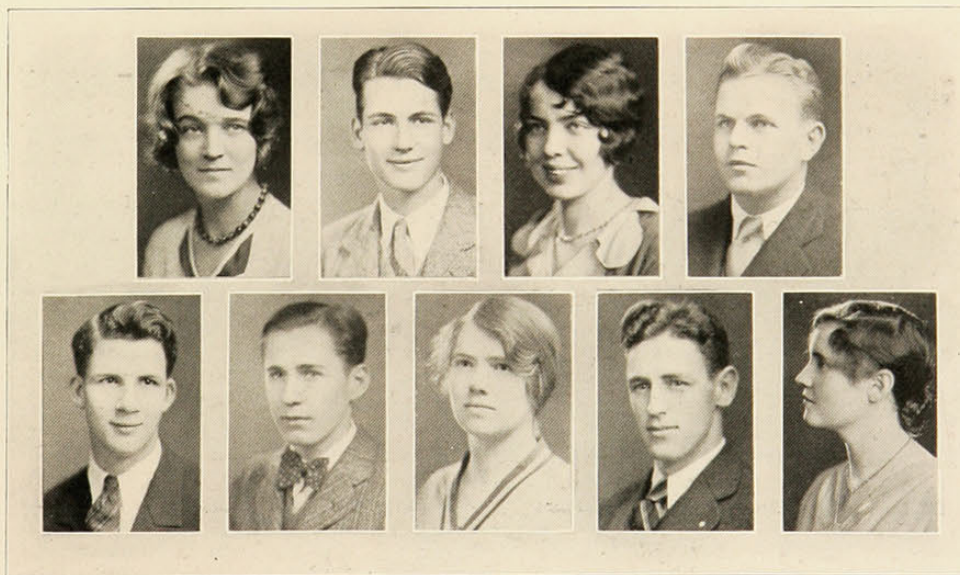
WILLIAM HAMMOND . . . . . *President*  
 GLENN SCOTT . . . . . *Vice-President*  
 ESTHER LUKENS . . . . . *Secretary*  
 ELIZABETH COOK . . . . . *Treasurer*

### MEMBERS

Elizabeth Cook, '30	Esther Lukens, '32
Rowena Evans, '30	Glenn Scott, '31
William Hammond, '30	Kathleen Sees, '31
William Leach, '31	Fred Waldman, '30
Larry Welch, '32	

THE LIBERAL ARTS TRIBUNAL, as yet in the first year of its existence, came into being at the end of the scholastic year 1928-29 in conjunction with the policy of Student Council to promote the creation of local governing bodies in each college.

As yet in its infancy, this organization has done little; but with the progress of the academic year the Liberal Arts Tribunal will fulfill its functions of regulating the activities of this college and conducting the local elections.



	Lukens	Hammond	Sees	Waldman	
Scott		Leach	Evans	Welch	Cook