

ARNOLD O. ABRAHAM,  
A.B.  
ΦΧ

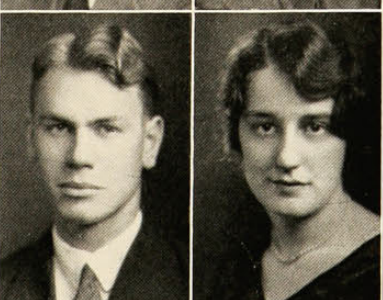
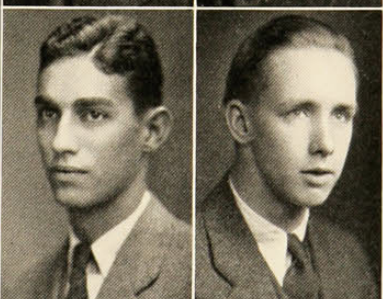
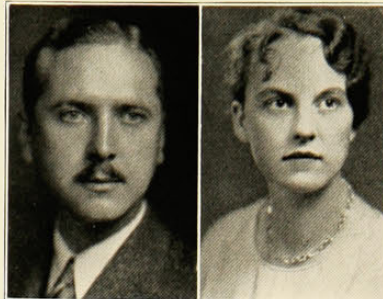
CHARLES S. ADAMS,  
LL.B.  
ΔΤΔ, ΣΣ, ΦΑΔ, ΠΔΕ

Treasurer Sophomore Class; Cincinnati Staff; Musical Comedy, Soph Hop, 2; Editor-in-Chief of Cincinnati; Junior Prom Chairman; Freshman Week Comm.; Musical Comedy; Midwest Conference Delegate, 3; Bus. Man. Cincinnati; Student Bond Issue; Musical Comedy, 4; Student Council; 5; President Midwest Student Conference, S. C.; Law Senate, 6.

R. O. ADAMS,  
E.E.  
ΗΚΝ

ROBERT AHRENS,  
LL.B.  
ΦΔΦ

DONALD ALCOKE,  
Com. E.  
ΔΣΠ, ΒΓΣ  
"C." Track 2, 3, 4; Co-op Engineer; Co-op Club.



HELEN ALEXANDER,  
B.S.

JANET AMBACH,  
B.S.  
ΖΤΑ

Musical Comedy Cast; Girls' Glee Club; Junior Show; Kindergarten Club.

HARRY C. ANDERSON,  
Com. E.  
ΠΚΑ, ΣΣ, ΠΔΕ

Cynic 2, 3; Freshman Week Com.; Student Council 4, 5; Ex. Council 4; Co-op Cabinet; Co-op Dance Com.; Junior Prom Com.; Pan Delegate; Chairman Gamble Memorial Drive; Bond Issue Comm.

HARRY W. ANDERSON,  
C.E.  
Triangle, ΤΒΠ

"C." Cross Country 2, 3; Track 2, 3; Cross Country Captain 4; Track Captain 4; Intramural Mgr.; Pres. Engineering Tribunal; Student Council; Treasurer of Senior Class; Co-op Dance Comm.

MARY VIRGINIA BRUCE,  
B.S.  
ΑΟΠ

Co-Op Club; Applied Arts Club; Aspirants; Varsity Art Club.