

1930

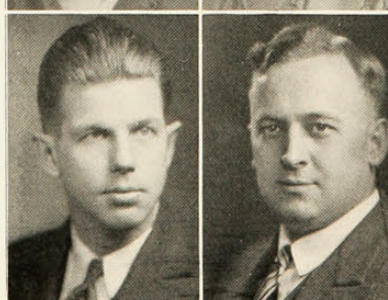
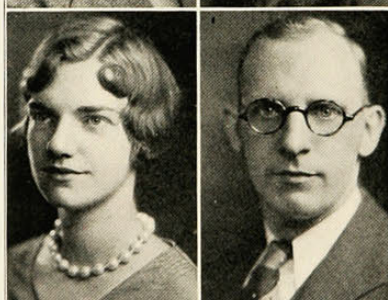
HERBERT ANDERSON,
C.E.
TBII
Dormitory Council.

WALTER APPLER,
A.B.
HΣΦ
Palaeolinguists; M u m -
mers; German Club.

VIRGINIA ARAND,
B.S.
Aspirants.

IRENE AREND,
B.S.
ZTA
Girls' Glee Club; Var-
sity Art Club; Applied
Arts Club; Applied Arts
Tribunal, President of A.
A. Tribunal; Junior Ad-
viser; Greek Games; Jun-
ior Show; Applied Arts
Ball Comm.

JAMES ASMANN,
E.E.



MARIE ATWOOD,
Cert. in Accounting

HELEN ELSIE AUSTIN,
LL.B.
ΔΣΘ

EARL J. AYLSTOCK,
B.S.
ΔΣΠ, ΒΓΣ
Commerce Club.

ELIZABETH BAASCH,
B.S.
ΑΔΠ

JUSTIN BABCOCK,
M.E.
A. S. M. E.; Co-op Club.