

1930

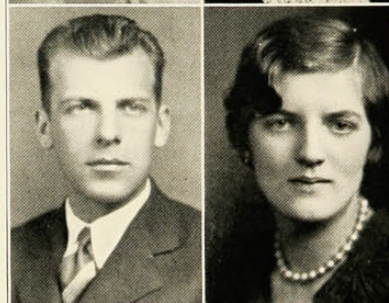
ALETHEA BREUER,
Cert. in Gen. Business
Evening Commerce Club.

FREDERICK BREYER,
A.B.
ΣΔP
Interfraternity Council.

EDWARD BRINK, JR.
LL.B.

EUGENE BRILMEYER,
E.E.

DORIS BROCK,
R.N.



RUBY L. BROCK,
B.S.
Areté

W. A. A.; Choritides;
University News; Junior
Show.

BERNADINE BROWN,
R.N.

Melody Club.

EDNA BROWN,
B.S.
KΔ

Freshman Y. W. C. A.;
University News; House-
hold Adm. Club; Junior
Show; Y. W. C. A. Comm.;
Student Council.

IDA M. BROWN,
B.S.

R. F. BRUNS, JR.,
Cert. in Gen. Business