

LESLIE CHAIN,
Cert. in Accounting
Evening Commerce Club.

PAUL CHAPMAN,
B.S.
ΛΧΑ, ΦΧ

ILA CLARK,
B.S.
ΑΑΠ
Melody Club.

WILLIAM CLARK,
M.B.

MARY CLARKSON
R.N.
Melody Club.



ROBERTA CLAY,
A.B.



MILDRED CLEMONS,
B.S.
ΚΑΘ, Mystic 13

Musical Comedy Comm.;
Soph Hop Comm.; Y. W.
C. A. Social Comm.; Jun-
ior Prom Comm.; "Y"
Handbook.



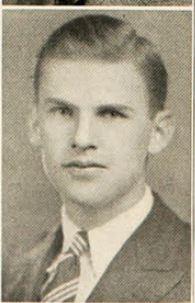
C. THOMAS CLIFTON,
A.B.
ΠΚΑ, ΣΣ, ΠΑΟ, Ulex

President of Freshman
Class; Student Council 1,
3, 4, 5; Engineering Trib-
unal, Freshman "Y"; Soph
Hop Comm.; Mummies;
Cynic; President of Y.M.
C. A.; Treas. of Student
Council; Ex. Board of
Student Council; Chair-
man of Freshman Week;
Varsity Boat Ride Comm.



WILLIAM CLIMER,
B.S.
ΛΧΑ, Ulex

"C" C. Club; Football
3, 4, 5; Baseball.



ROBERT COCHRANE,
C.E.
ΔΤΔ

Braune Civils; Intra-
mural Manager.