

G. J. GIALDINI,
C.E.

Scabbard and Blade;
Braune Civils; S. A. M. E.

GUNDER GILBERTSON,
B.S.
AXA

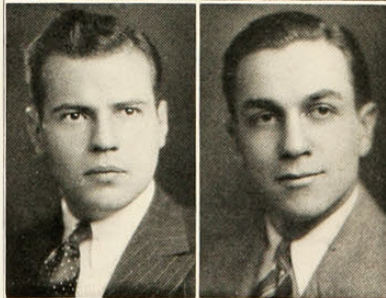
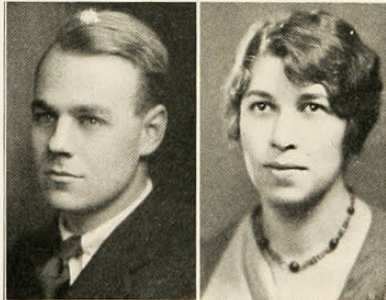
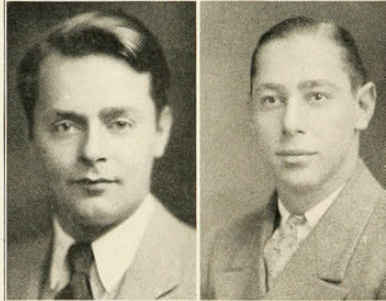
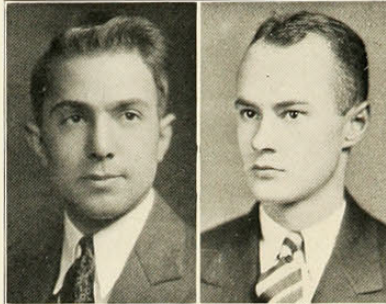
Co-Chairman of Senior
Hop.

KIRK GILFILLIN,
A.B.
ΦΑΔ

MARY GILLETTE,
B.S.
ZTA, Areté

Women's Athletics;
Chairman of Greek Games;
Glee Club; Junior Adviser;
Treasurer of W. A. A.;
Junior Show; President of
W. A. A.

CHARLES GINOCCHIO,
LL.B.
ΦΔΦ



FRANCIS GLEASON,
E.E.

EDWARD GOLDMEYER,
Ch.E.
ATQ, Ulex

"C" C Club; Track 2,
3, 4.

CATHERINE GOLDSMITH,
B.S.
ΦΣΣ, Areté

Aspirants; News Re-
porter; Literary Society;
News Staff; W. A. A.
Board; Junior Show.

LUCY GOODRICH,
B.S., R.N.
KAO, AAPI

Pres. of Junior Class
of Nursing; Melody Club;
Pres. of Senior Class of
Nursing.

EDWARD GORSUCH,
Com.E.

Scabbard and Blade;
Asst. Editor of R. O. T. C.
Shield; Men's Glee Club;
Military Ball Comm.