

1930

DOROTHY KEATING,
A.B.
ΔΖ
Cincinnati Staff.

LOUISE KENNEDY,
B.S.
ΑΧΩ. ΤΗΕ

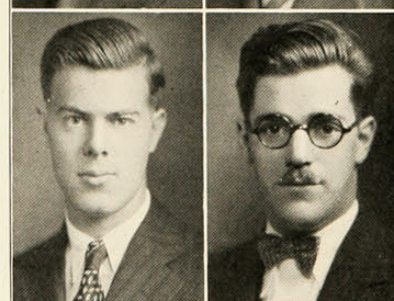
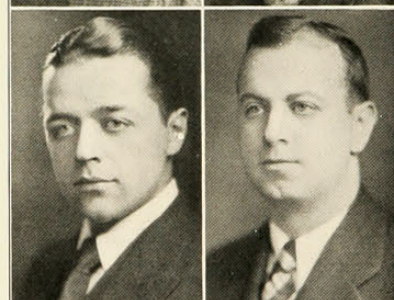
League of Women
Voters; Household Ad-
ministration Club; H. A.
Tribunal; Greek Games;
Junior Show.

ROBERT KENNEDY,
B.S.
L'Atelier.

Applied Arts Tribunal;
Glee Club; Chairman of
Beaux Arts Ball; Presi-
dent of Applied Arts Tri-
bunal; Applied Arts Jour-
nal.

JOHN KIESSLING,
Com.E.
ΒΓΣ
"C"; C Club; Baseball
2, 3; Basketball 3, 4, 5.

CATHERINE KILCOYNE,
B.S.



ROY KILE,
B.S.

RIDLON KIPHART,
C. in Advertising.
Evening Commerce Club.

EDWIN KISKER,
C. in Advertising,
ΔΣΠ

LAWRENCE KLEIN,
A.B.

ARTHUR F. KNOLL,
E.E.
Freshmen Football; Dor-
mitory Council; A.I.E.E.