

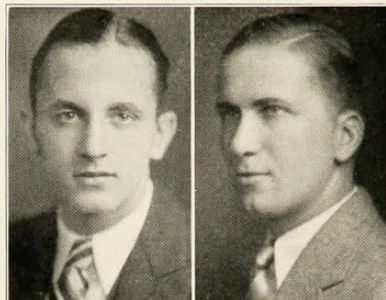
G. S. LAMRIN,
B.S.

CHESTER LANCASTER,
Com.E.

VANCE LANG,
A.B.
ΒΘΠ
Freshman "Y" Cabinet;
Junior Corner Comm.;
Gamble Memorial Drive;
Chairman of Hotel Var-
sity; Freshmen Week
Comm.

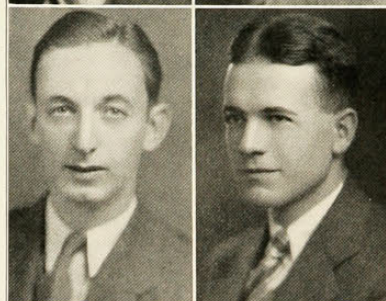
ELIZABETH LAQUE,
B.S.
ΣΑΙ

ADELAIDE LASKY,
B.S.
Spanish Club; Paleo-
linguists.



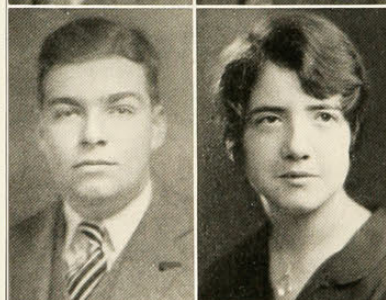
JOHN H. LAUB,
B.S.
ΦΚ

"C"; C Club; Football
1, 2, 3, 4; Track 1, 2;
Track Manager.



DANIEL C. LAURENCE,
Com.E.
ΣΧ

Mummers; A.I.E.E.; Mum-
mers' Board; Commerce
Club; Co-op Dance Comm.;
Co-op Cabinet; Co-op
Stag Comm.; Manager of
Senior Play; Freshman
Reception Comm.; Bus.
Mgr. of Mummers.



RUTH LAYNE,
A.B.
ΘΦΑ, Mystic 13

W. S. G. A.; League of
Women Voters; Greek
Games; W.A.A.; Play Day
Comm.; Vice-President of
W.S.G.A.; Junior Show
Comm.



MORRIS LEAVITT,
Ch.E.
Dormitory Council; A. I.
C. E.



RUTH JANE LEE,
B.S.
Glee Club; W. A. A.