

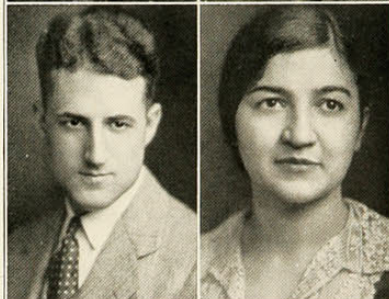
GERSON LOWENTHAL
M.B.

EDWIN LUDWIG,
A.B.
Spanish Club.

JOHN MARIONIS,
M.B.

ESTHER MARTING,
B.S.

ALICE McCaffrey,
B.S.
Newman Club; Greek
Games; Spanish Club;
Kindergarten Club.



MARY ALICE
McCartney,
A.B.

Paleolinguists; Aspirants;
Newman Club; Le
Circle Français.

ELIZABETH MCCOY,
R.N.
Melody Club.

JASPER McCLURE,
M.B.
ΠΚΑ, ΑΚΚ

T. E. McLain,
C. in Advertising.

MARION McMILLAN,
A.B.

ΘΦΑ, Papyrus,
Mystic 13

Greek Games Comm.;
Vice-Pres. of Sophomore
Class; League of Women
Voters; News Staff; W. S.
G. A. Executive Board;
Cincinnati Staff; Y. W.
Cabinet; Musical Comedy
Comm.; Junior Adviser;
Junior Prom. Comm.;
Pan Hellenic President;
Secretary of Student Council;
Ex. Secretary of 1930
Musical Comedy.