

1930

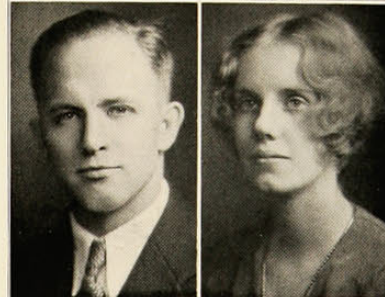
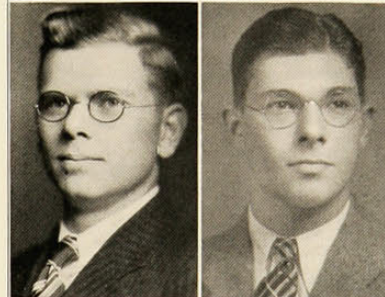
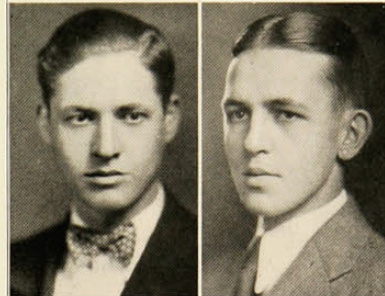
CHARLES MACNISH,
C.E.
A.C.C., TBΠ

NORMA MEIER,
B.S.
Areté
W.A.A.; Junior Show;
Choritides.

WILLIAM MEIER,
LL.B.
A.C.C., ΦΑΔ
Pre-Legal Club; Fresh-
man Guidance Comm.;
Bond Issue Comm.

PAUL MENGELKAMP,
Com.E.
Newman Club.

PAUL MERRELL,
M.B.
ΣΑΕ, ΑΚΚ



HOWARD MERRIMAN,
A.B.

French Club; Interna-
tional Relations Club;
Spanish Club.

VIOLA METTERNICH,
A.B.

Greek Games; German
Club; Bag and Hammer
Club.

ROBERT MEYER,
C.E.
A.C.C.

DONALD MILLER,
B.S.

MARCELLA MILLER,
B.S.
ΑΧΩ

Girls' Glee Club; Aspir-
ants; Kindergarten Club.