

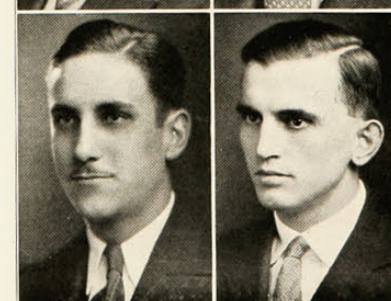
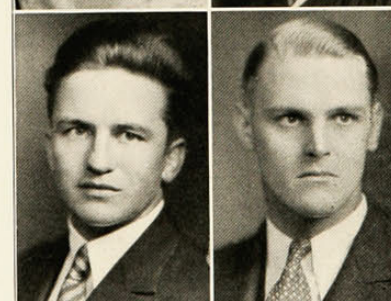
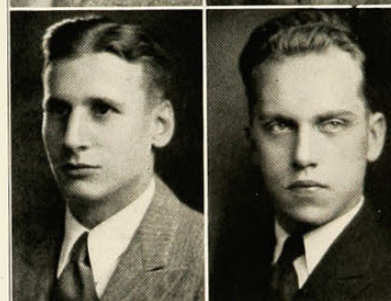
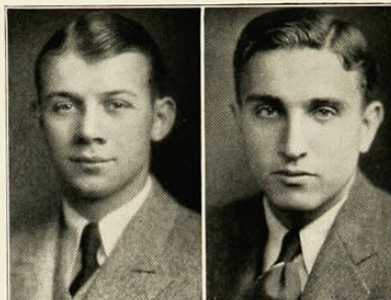
STANLEY MOEBUS,
A.B.
 $\Delta\Theta\Phi$
Debating Manager.

BAXTER G. MOORE,
Com.E.
 $\Pi\kappa\alpha, \Delta\Sigma\Pi$
"C" C Club; Assistant
Cheer Leader; Baseball
Manager; Newman Club;
Commerce Club; Y.M.C.A.
Cabinet; Freshmen Recep-
tion Comm.

JULIET MOORE,
B.S.
 $\kappa\Delta$
Kindergarten Club.

HARMON MORRESS,
B.S.
Wrestling Team; Foot-
ball Squad.

DWIGHT MOORHEAD,
M.E.
 $\Pi\chi\epsilon, \Pi\tau\Sigma$
Scabbard and Blade.
R.O.T.C. Shield; Mum-
mers; Musical Comedy
Comm.; Cadet Regimental
Staff; Military Ball Comm.



BEN MOSKOWITZ,
A.B.
"C"; C Club; Basket-
ball; Tennis.

JAMES P. NEAL,
E.E.
 HKN ,
Scabbard and Blade.
Dorm. Council; Dorm.
Honor Key; A.I.E.E.

DOROTHY NICHOLS,
B.S.
 ΔZ
Mummers; Greek Games;
Y.W.C.A. Board; Cincin-
natian Staff; Household
Administration Club.

WILLIAM NIEMAN,
LL.B.
 $\Lambda\chi\alpha, \Sigma\Sigma, \Phi\Delta\Delta, \Pi\Delta\epsilon$,
Cincinnatus.
Editor-in-Chief of the
University News; Bus.
Mgr. of 1930 Musical
Comedy; Fresh Painters.

OSWALD NOBLE,
C. in Mech. Eng.