

1930

GEORGE OBERKLEIN,  
M.E., M.S.

Triangle.

LULU ODOMS,  
B.S.  
ΦΣΜ

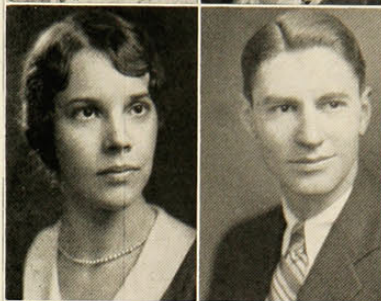
CORDELIA OGLE,  
B.S.  
ZTA.

Chemistry Club; House-  
hold Administration Club.

MARY G. OLIVER,  
B.S.  
TIE

Household Ad. Club.

CLETUS OLLIER,  
C. in Finance.



CAROLINE OSWALD,  
C. in Advertising.  
Evening Commerce Club.

FRANK OWENS, JR.  
LL.B.  
ΣΦΗ, ΣΣ, ΦΑΔ, ΠΔΕ

"C"; C Club; Track,  
Soph. Hop Comm.; Vigil-  
ance Comm., 2; Pres. of  
Junior Class, Student  
Council; Executive Board  
of S.C.; Varsity Boat Ride  
Comm.; Ass. Editor of  
Cincinnati, 3; Musical  
Comedy Comm.; Chair-  
man of Freshman Week;  
Student Council, 5; Editor  
of the Cincinnati, 6.

MARGARET PALMER,  
C. in Gen. Business.  
Evening Commerce Club.

DOROTHY PASSMORE,  
B.S.

RUTH PARKER,  
A.B.