

1930

SAMUEL PARTNEY,  
M.B.



GLENNAMAE PETER,  
R.N.



EVALYN PARTYMILLER,  
B.M.  
A.E.I.



PAUL PFEFFER,  
Com.E.



VIRGINIA PAYNE,  
A.B.  
QU

Mummers; Women's De-  
bating; Cynic; Mummer's  
Board.



ELMER PFLEGER,  
C. in Marketing.



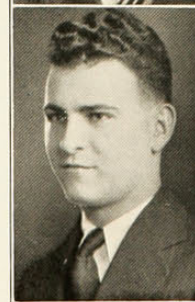
JOHN PENDERY,  
Com.E.  
AKΨ, BΓΣ



MARGARET PHELPS,  
R.N.



ARTHUR PESA,  
Com.E.



KENT PHILLIPS,  
C.E.  
University Band; Dor-  
mitory Council.

