

1930

STEVEN ROELLINGER,
C. in Marketing.
Evening Commerce Club.



FANNIE ROSENTHAL,
B.S.
Kindergarten Club.



DOROTHY ROESSNER,
B.S.
ΘΠ

W.S.G.A.; Greek Games;
W. A. A.; Paleolinguists;
Y.W.C.A.; League of Women
Voters; Kindergarten
Club.



BLANCHE RULE,
A.B.
ΔΔΔ, TKA, Mystic 13

W.A.A.; News Staff;
Mummers; Debating; Cin-
cinnatian Staff; League of
Women Voters; Junior
Show Comm.; Debate
Council; W.S.G.A. Coun-
cil.



HOWARD RONSHEIN,
B.S.
L'Atelier

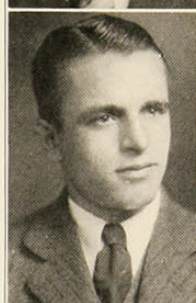


GLADYS RUMPLER,
B.S.
AXΩ, Areté

Girls' Glee Club; Chor-
itides; Varsity Art Club;
Greek Games.



JOSEPH ROSA,
C.E.
Co-op Senate; Dormi-
tory Key; Boxing; Intra-
mural Council.



CARYL RUPE,
B.S.



EMMA ROSE,
R.N.
AAΠ
Melody Club.



FRANCIS RUSSELL,
A.B.
Chemistry Club.

