

1930

RUBY SMITH,
A.B.

W. S. G. A.; Aspirants;
League of Women Voters.

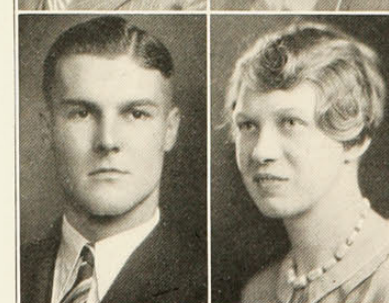
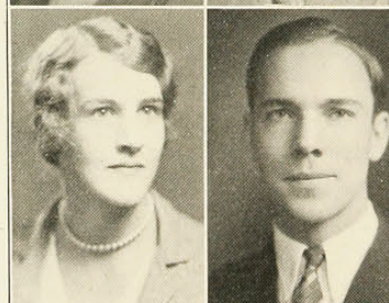
RUTH SMITH
B.S.

EDITH SOHN,
A.B.

League of Women Voters;
Paleolinguists; International Relations Club.

WILLIAM SOLINGER,
B.S.

JAMES SOWER,
C.E.



NICHOLAS SPANG,
C.E.

VIRGIL SPENCER,
M.E.
A. S. M. E.

DAVID SPONSELLOR,
C.E.

GRACE STANDLEY,
A.B.

FLORENCE STANSBURY,
A.B.

W.S.G.A.; Greek Games;
International Relations Club.