

ELEANOR TOWNLEY,
B.S.

Chemistry Club; Greek
Games; H. A. Club.

HENRY TRAPP,
E.E.

A.I.E.E.

SIDNEY TRAVERS,
LL.B.

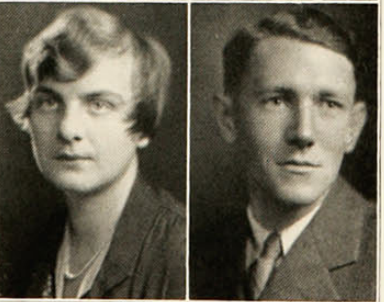
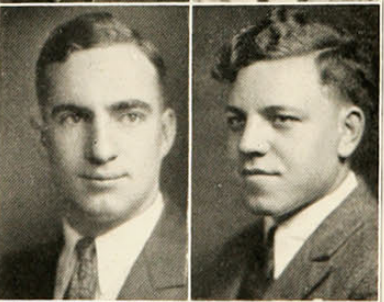
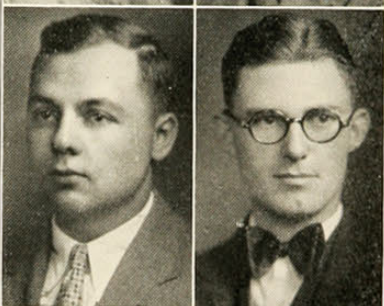
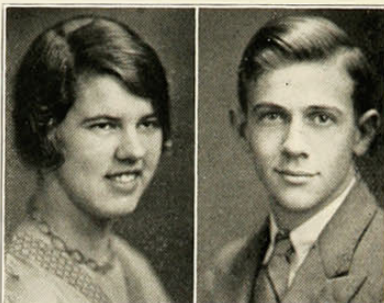
BURSON TREADWELL,
M.E.

A. S. M. E.; Dormitory
Council; Co-op Club.

LOUISE TWACHTMAN,
B.S.

ΑΓΔ, Areté

W.A.A. Board; Chori-
tides.



J. GAY VANDERMARK,
M.B., B.S.
ΦΡΣ

"C"; C. Club; Cross
Country 2, 3, 4; Track
2, 3, 4.

SAMUEL VAN LIEU,
C.E.

MARY VOGT,
R.N.
ΑΑΠ

Melody Club.

KENNETH VORDENBURG,
LL.B.

STANLEY VORDENBURG,
LL.B.
ΒΘΠ, ΦΑΔ