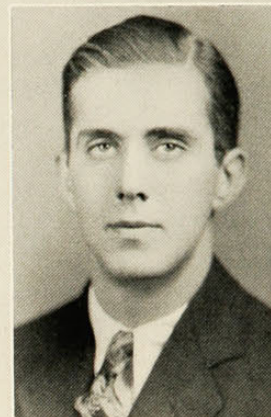
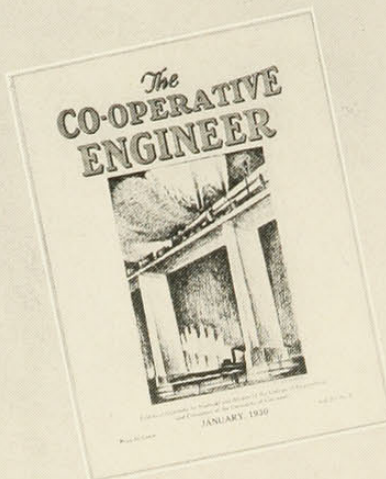


1930



Herman



Reed

## Co-Operative Engineer

### EDITORIAL STAFF

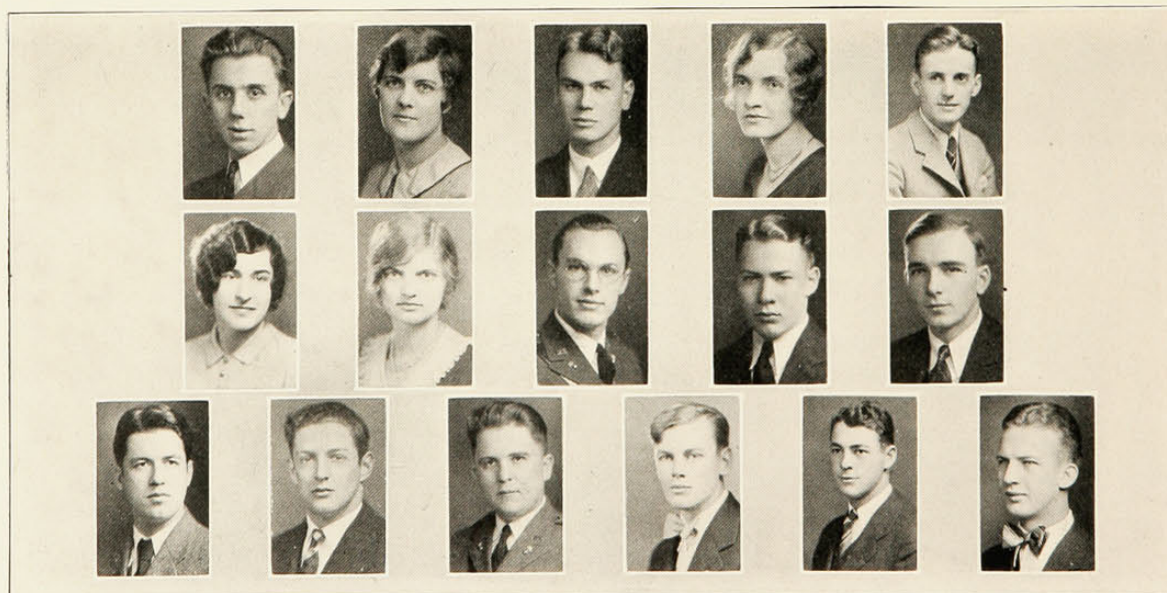
Selma F. Herman.....Editor-in-Chief  
 Carl Heyel.....Managing Editor  
 C. T. Handick.....Alumni Editor  
 G. B. Brossert.....Associate Editor  
 O. S. Bray.....Associate Editor  
 E. E. Caspell.....Associate Editor  
 D. T. Michael.....Associate Editor  
 C. H. Frederick.....Associate Editor  
 A. E. Blount.....Associate Editor  
 Wm. E. White.....Associate Editor

### BUSINESS STAFF

T. B. Reed.....Business Manager  
 D. M. Alcock.....Secretary  
 D. J. Driscoll.....Art Editor  
 Verna Schumacher.....Advertising Manager  
 Lorraine Bratfish.....Asst. Advertising Manager  
 Ruth N. Alexander.....Exchange Manager  
 D. G. Galloway.....Exchange Manager  
 Lateure Kendall.....Circulation Manager  
 C. R. Meese.....Asst. Circulation Manager  
 C. T. Hendricks.....Associate Editor

### ADVISERS

Professor Clyde W. Park.....Editorial  
 Professor Daniel Cook.....Art  
 Professor Norwood C. Geis.....Business



Driscoll Heyl Galloway Alcock Schumacher Hendricks  
 Bratfish White Alexander Caspell Blount Michael  
 Meese Bray Kendall Brossert