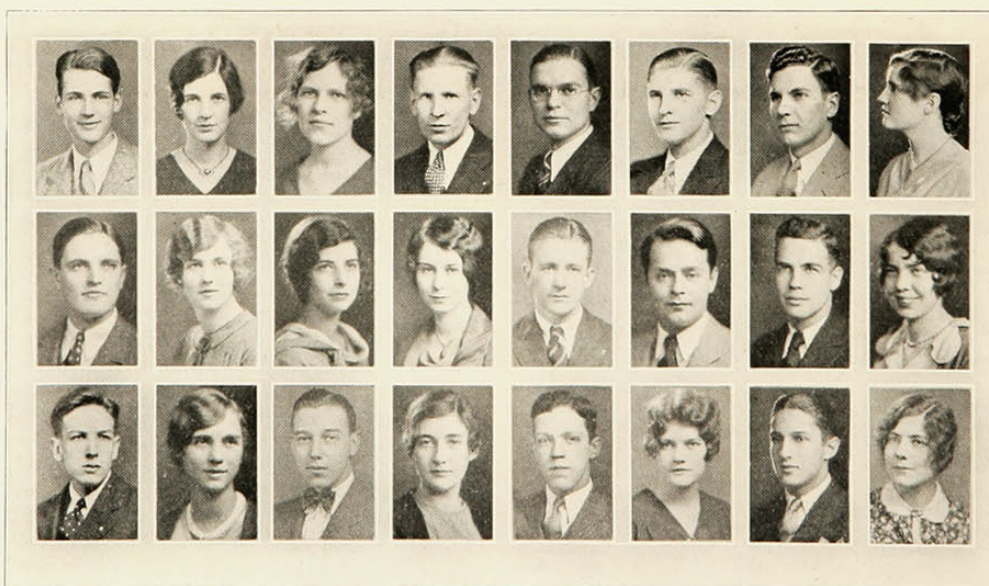


EXECUTIVE COMMITTEE

Professional Director.....John Redhead Froome
 Student Director.....John G. Gayman
 Business Manager.....William H. Nieman
 Executive Secretary.....Marion McMillan
 Music Director.....Richard Fluke
 Dancing Director.....Josef Castle
 Orchestrator.....Clifford Lang
 Faculty Adviser.....Alan K. Laing

PRODUCTION COMMITTEE

Assistant Student Director.....Betty Cook
 Assistant Business Manager.....Paul Heckel
 Director of Publicity.....Harry Porter
 Assistant.....C. Chester Charles
 Committee—Frances Durbin, Hannah Grad
 Chairman of Tickets.....William Hammond
 Assistant Chairman.....William Horstman
 Assistants—Carl Balzer, Robert Gaffney
 Master of Wardrobe.....Theodore Dunn
 Assistant—C. K. Geiringer
 Mistress of Wardrobe.....Ruth Cunningham
 Assistants—Angelese Hays, Dorothy Galloway
 Master of Properties.....Mike Conner
 Assistant—Jan Liszniewski
 Mistress of Properties.....Kathleen Sees
 Assistant—Janet Gebhardt
 Stage Manager.....Erle Hanson
 Score Editor.....Mary Elizabeth Davies
 Score Manager.....Jack Thornell
 Program Editor.....Margaret Miller
 Program Manager.....Charles S. Adams
 Chairman of Music.....Margaret White
 Assistants—Lyle Franz, Virginia McBride, Clara Louise Zinke
 Chairman of Lyrics.....Melba Phillips
 Assistants—Helen Dean, Virginia Willis
 Chairman of Scenery Committee.....Jack Thornell
 Chairman of Costume Committee.....Helen Breese
 Assistant—Virginia Ernst
 General Secretaries.....Ellen Peters, Betty Moeser



Hammond	Beirne	Davies	Heckel	Adams	Hanson	Thornell	Cook
Porter	Cunningham	Miller	Hays	Conner	Gilbertson	Tower	Sees
Mueller	Moeser	Balzer	Gebhardt	Mowatt	Durbin	Katz	Peters