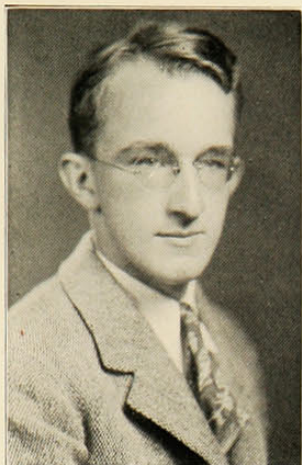


1930



Simrall

## Sophomore Hop



### COMMITTEE

ED. SIMRALL, *Chairman*

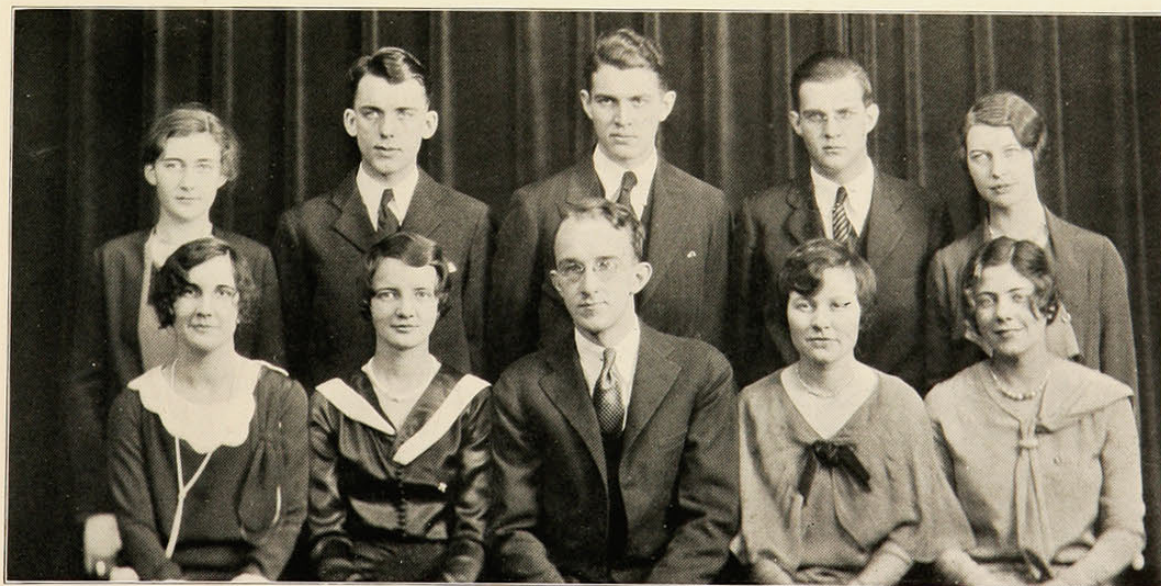
Ed. Hammond  
Ida Hoinke  
Christine Schoor  
Bob White  
Mary Wilson  
Edward Ebeling

Morton Brown  
Janet Gebhardt  
Charles Wilson  
Ellen Peters  
Bill Fletcher  
Wilson Bailey

**H**EARTS to the right of them, hearts to the left of them, danced the six hundred who attended the annual Soph Hop. For the theme of the party was taken from the quaint story of old Saint Valentine.

And thus, dodging in and out among the dangling valentines, the convivial dancers spent a merry evening at the old Gym. From all indications, if one may judge by facial expressions, the dance was a huge success.

At least, so the little co-eds thought, for each one danced her way through the night until the last strains of music died away.



Gebhardt  
Schott

Fletcher  
Brown

Ebeling  
Simrall

Bailey  
Hoinke

Wilson  
Peters