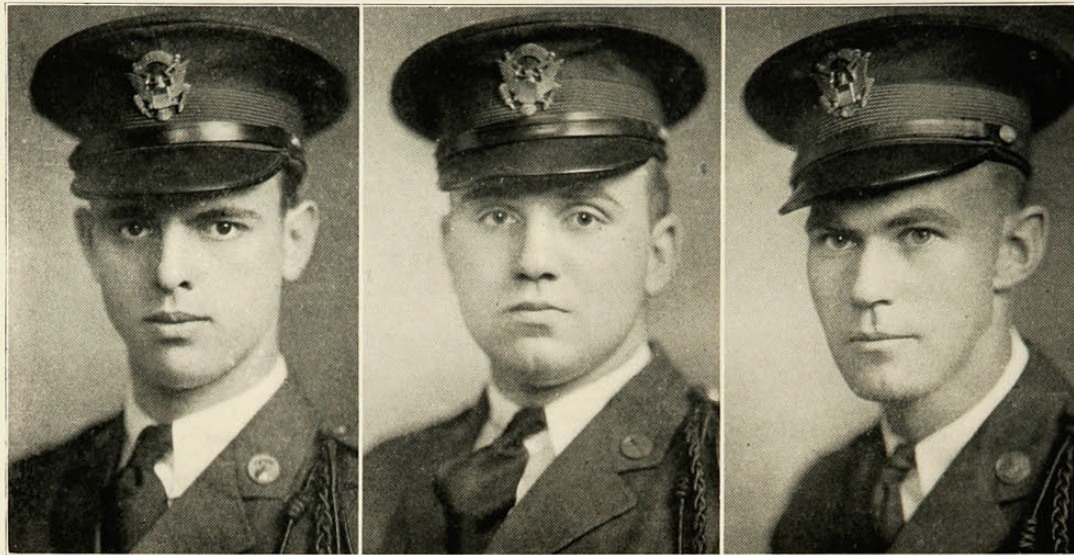


1930



Lt. Col. R. E. Phinney

Col. Al. Ritten

Lt. Col. D. J. Hutton

*Regimental Commander*  
Colonel A. J. Ritten

*Regimental Adjutant*  
Major L. V. Peet

*Assistant Regimental Adjutant*  
Captain R. B. Bowres

*Administration*  
Major C. P. Schneider

*Plans and Training*  
Major H. H. Winkelman

*Intelligence*  
Major R. C. Taylor

*Supply*  
Major E. C. Gorsuch

*Assistants*

Captain R. C. Hood  
Captain H. W. Lewis

Captain A. S. Emons  
Captain R. W. Barsdale

*Band Commander Section I*  
Captain V. E. Curran

*Band Commander Section II*  
Captain O. T. Egolf

*First Battalion Commander*  
Lt. Colonel R. E. Phinney  
Major D. E. Morehead, Adjt.  
Captain G. H. Edwards, Ass. Adjt.

*Second Battalion Commander*  
Lt. Colonel D. J. Hutton  
Major J. G. Sutherland, Adjt.  
Captain G. C. Carlson, Ass. Adjt.



Lewis  
Schneider

Taylor  
Gorsuch

Peet  
Phinney

Emmons  
Collom

Winkelman  
Ritten

Curran  
Hutton

Egolf  
Morehead

Sutherland