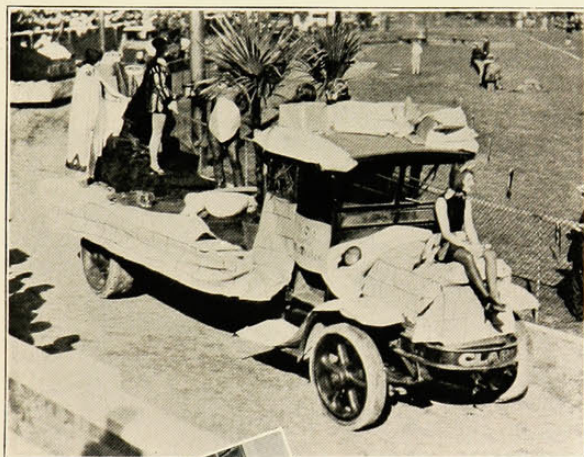
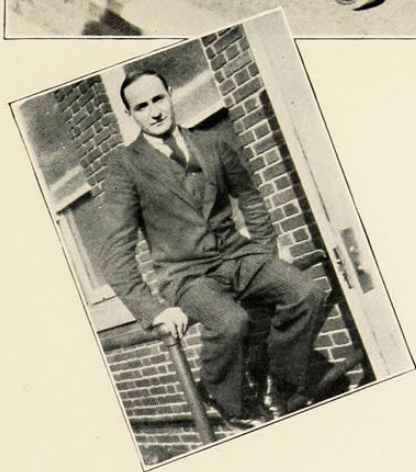


1930

The Lam Chis lift the cup from the Sigma Delta Rho mantel with their interpretation of college from the viewpoint of the public and that of the Co-op.



But taking the cup from the Alpha Chis is too much of an assignment. Here's their winning entry.



Presenting "My Pal," the greatest of modern football coaches, and a few of the Mystics trying to pretend they are doing something in accordance with tradition.

