

1930

# Phi Rho Sigma

PROFESSIONAL MEDICAL FRATERNITY

Founded at Rush Medical College, 1890

33 Chapters

ALPHA THETA CHAPTER, Established 1927

## MEMBERS IN FACULTY

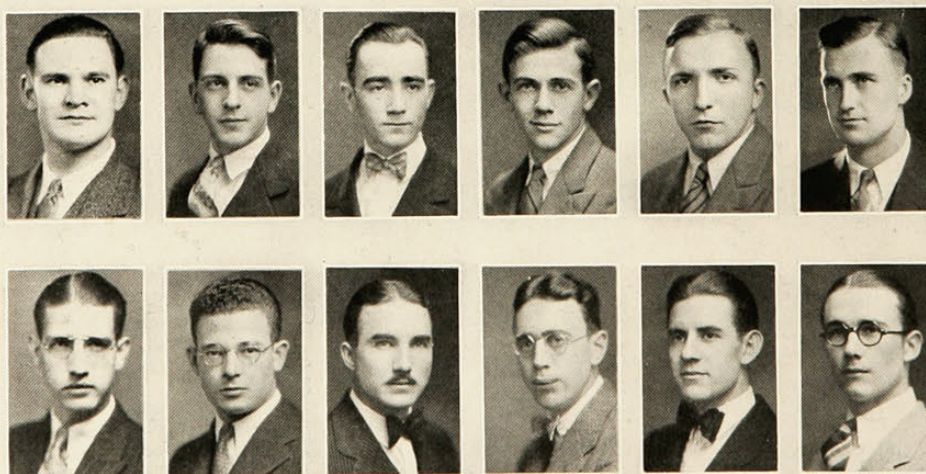
DR. D. T. VAIL

DR. N. C. FOOT

## ACTIVE MEMBERS

Earl W. Bailey, '32  
C. L. Baker, '32  
Herbert Boehner, '33  
Ernst E. Ekmeyer, '30  
Harry C. Ernsting, '30  
Emory R. Irwin, '31  
Karl Lippert, '32  
Donald K. Mathews, '31  
Russel E. Kinsey, '31

Chas. W. Le Master, '30  
Harold R. Mayberry, '31  
Jean A. Nock, '32  
Ewald Pawsat, Jr., '32  
Gerrit W. Raidt, '30  
Sidney Scorse, '31  
Edward Studenberg, '31  
J. Gay Van Dermark, '30  
William F. Vinnedge, '33



Scorse  
Bailey

Ernsting  
Boehner

Raidt  
Mathews

Van der Mark  
Irwin

Ekmeyer  
Kinsey

Vinnedge  
Le Master