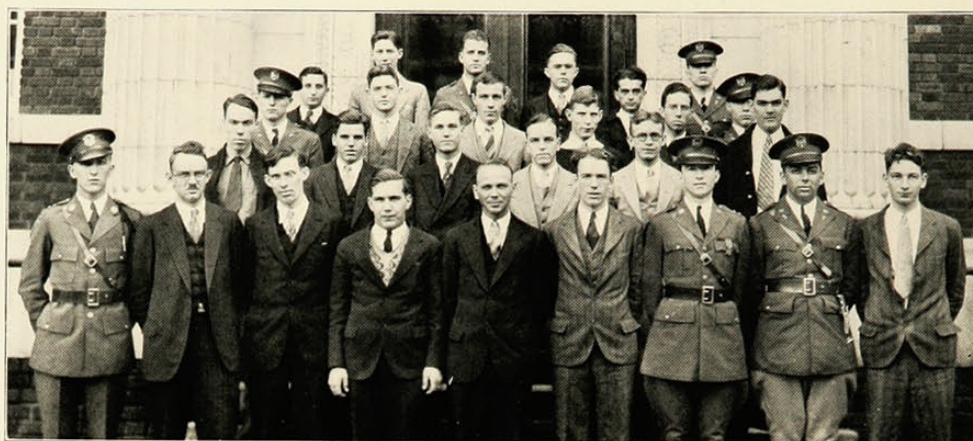


1930



SECTION I

American Institute of Chemical Engineers

OFFICERS

CHARLES E. POTTER.....*President*
 JAMES C. ERVIN.....*Vice-President*
 FRANCIS C. GLEASON.....*Secretary*
 DAVID RICHARDSON.....*Treasurer*

THE University of Cincinnati Student Branch of the American Institute of Chemical Engineers was installed in the fall of 1926 for the purpose of promoting the social and professional acquaintance of students pursuing courses in Chemical Engineering with men in the industry of Applied Chemical Science.

Membership in the Student Branch is composed of active and associate members. Active membership is by election and scholastic standing. Associate membership is open to any student registered in the chemical engineering course.

The student branch is in intimate association with the recognized organization of chemical engineers, the A. I. Ch. E. Meetings are held weekly on Thursday noon, and once a month in the evening.



SECTION II