

1930



SECTION I

American Society of Mechanical Engineers

OFFICERS

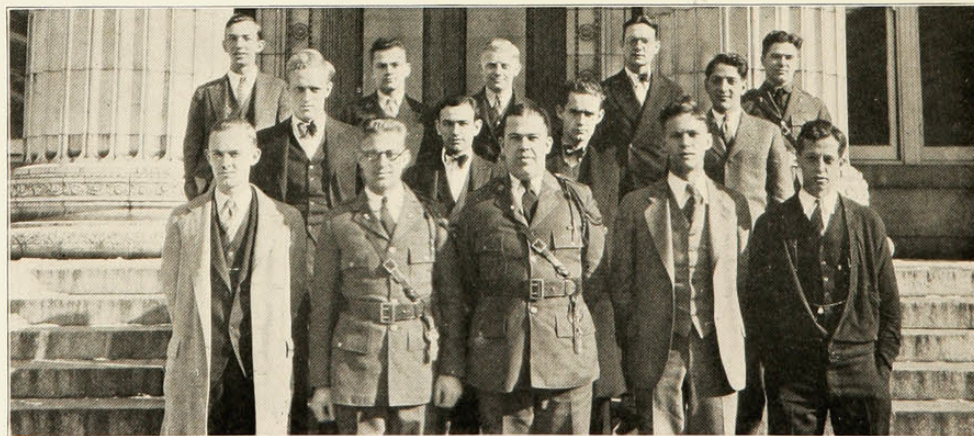
R. E. PHINNEY.....*President*
W. B. ENSINGER.....*Vice-President*
E. E. BASTELL.....*Secretary-Treasurer*
CHARLES SNYDER.....*Assistant Secretary-Treasurer*

FACULTY MEMBERS

C. A. JOERGER H. H. MESSINGER J. W. BUNTING

THE STUDENT BRANCH of the American Society of Mechanical Engineers was established in 1911 for the purpose of gathering together the students pursuing courses in Mechanical Engineering and interested in that profession. The growing prominence of the mechanical engineer in every field of industrial activity and the great influence and value of intimate association with the recognized organization of engineers has brought about the establishment of the student organizations affiliated with the American Society of Mechanical Engineers.

The Student Branch is open to all students in mechanical engineering and fosters social and engineering activities. The election of officers is held at the annual spring banquet which completes the activities for the year.



SECTION II