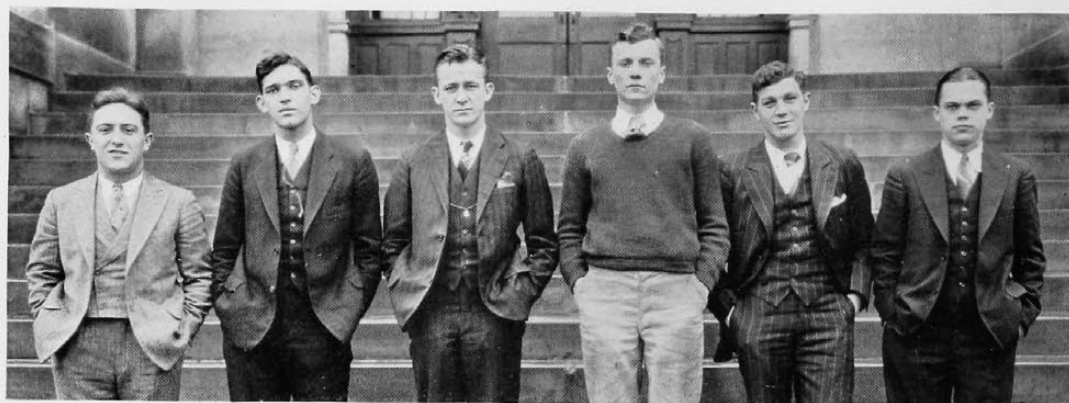


POTS, PADDLES AND PRINCES



Rosenblatt

Nau

Conner

Whitesides

Gradison

Rose

Council of Six

"Mike" Conner
"Wolf" Gradison
"Booby" Nau

"Bud" Rose
"Rosy" Rosenblatt
"Farmer" Whitesides

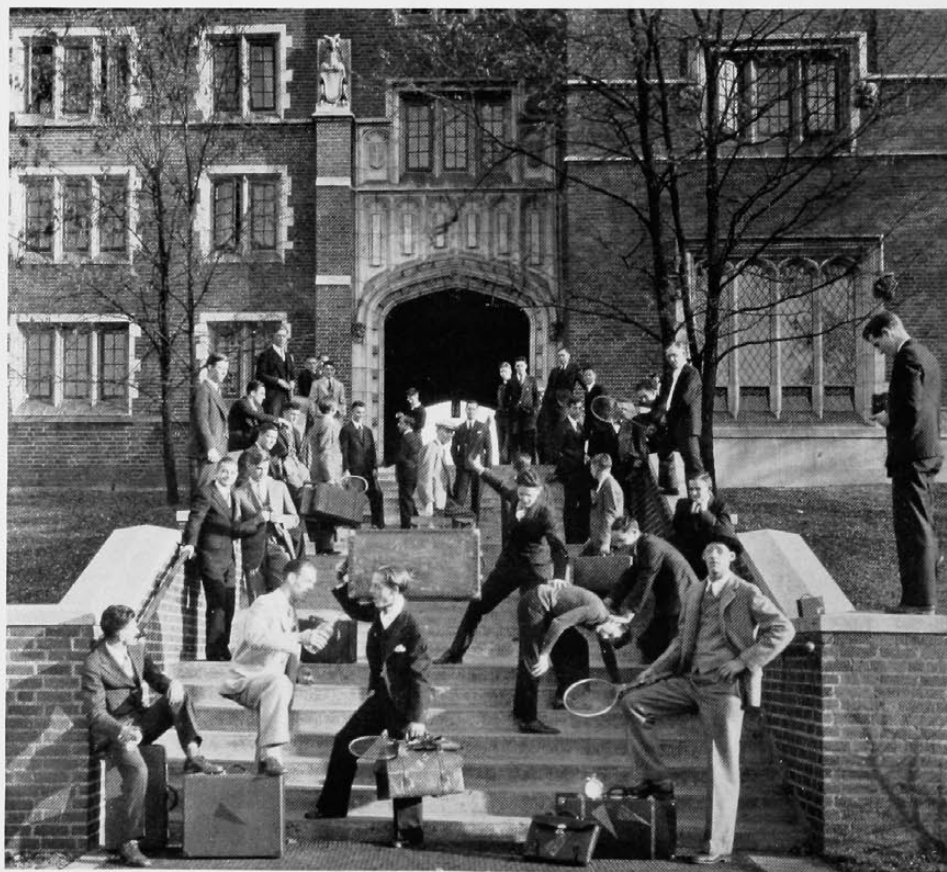


This is one of the few times when a size 12 shoe is a material aid. Vigilants are of great assistance to the frosh in finding their own foot-gear as you can plainly see in the picture to the left. Of course there is a possibility of acquiring a better pair of shoes but action in the rear eliminates much pondering on that subject.

Amid much back-slapping, hand-wringing, and baggage smashing, the second section engineers arrive at The Campus Independents' Club. According to the advice in the "Y" Handbook, these boys brought along plenty pillow cases and extra blankets, not to mention long underwear.

Upper classmen, assuming an attitude of nonchalance, look over the new material. (Quantity and quality of baggage taken into due consideration.)

Rolly Detjen, president of the Dorm Council, and lyric tenor of the prize-winning Dorm Glee Club, is seen straining his ears. Perhaps he is seeking someone to fill the vacancy on his Glee Club, left by "Farmer" Whitesides who resigned to devote his energies to the Council of Six. "Farmer" is not seen in the picture because he was locked in the stadium so as not to disillusion any new students about college.



The Dorm dons her festive colors to welcome returning sons