

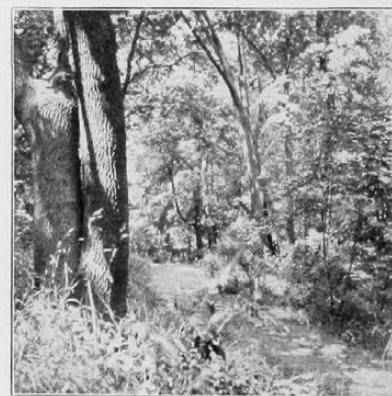


JOSEPHINE P. SIMRALL, B.S.
Dean of Women

Among other outstanding achievements, Miss Simrall has this year secured four valuable scholarships for women at the University. The scholarships are offered by the Delta Phi Epsilon Sorority, The D. A. R., The College Club and by the local Women's Panhellenic Association.

Dean Josephine P. Simrall, after her sabbatical leave of absence, returned to us this year to resume her work in guiding the affairs and activities of women on the campus.

Immediately confronting her was the problem of sorority rushing, a problem which never seems to remain solved for two years in succession. In place of last year's second semester pledging, freshmen received bids this year on October 10th. September and early October included one elaborate party after another. This program, however, proved not entirely satisfactory, since we find Women's Panhellenic providing for a two-weeks' rushing period for next year. It is hoped that this experiment will be the solution to the difficulty facing sororities and be satisfactory to both rushee and sorority.



Fall comes to Burnet Woods