

Heyel

Kendall

THE CO-OPERATIVE ENGINEER

CARL HEYEL, '31*Editor-in-Chief*
 D. T. MICHAEL, '31*Managing Editor*
 OSCAR S. BRAY, '32*Associate Editor*
 E. E. CASPELL, '32*Alumni Editor*
 MERRILL LEACH, '31*Athletic Editor*
 E. A. BLOUNT, '32*Associate Editor*
 MIRIAM C. ROLLMAN, '32*Assistant Editor*
 C. H. FREDERICKS, '31*Assistant Editor*

LATEURE KENDALL, '32*Business Manager*
 ALFRED S. EMMONS, '31*Executive Secretary*
 CHAS. M. CONNER, '31*Art Editor*
 LORAIN BRATFISH, '31*Advertising Manager*
 M. C. HUNT, '32*Assistant Advertising Manager*
 RUTH N. ALEXANDER, '31*Exchange Manager*
 D. N. BROWN, '32*Exchange Manager*
 C. R. MEESE, '32*Circulation Manager*
 E. B. KRAMER, '32*Assistant Circulation*

Assistants

L. Bradt
 D. Brown
 R. Clark
 M. R. Cordrey
 D. Donahue
 N. Drucker

G. E. Dusterberg
 D. F. Frame
 C. Freudenberg
 O. M. Halpenny
 A. L. Helmer
 A. Hickey
 J. C. Hoffman

R. R. Kilgore
 M. K. Lewing
 A. F. Levy
 M. C. Lowndes
 E. M. Meakin
 Mary Mauntel
 D. D. Olinger

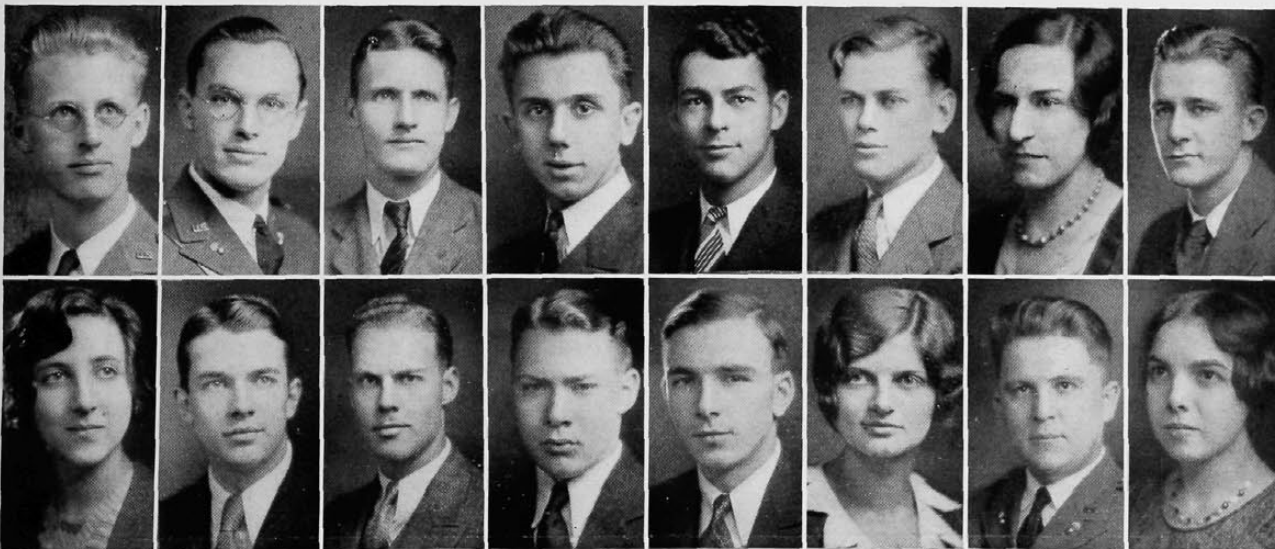
G. W. Peoples
 H. J. Renshaw
 R. Richey
 A. W. Sauer
 M. Shaw
 C. H. Srofe
 J. Stockwell

H. Straus
 C. M. Tollefson
 H. L. Tullis
 R. W. Vosslander
 J. C. White
 L. F. Winston

Advisors

PROFESSOR CLYDE W. PARK*Editorial*
 PROFESSOR DANIEL COOK*Art*

PROFESSOR NORWOOD C. GEIS*Business*



Emmons
Brown

Caspell
Hunt

Leach
Galloway

Heyel
Blount

Kendall
Michael

Bray
Alexander

Bratfish
Meese

Conner
Rollman