

Nineteen-Thirty-One

EDWARD O. GUERRANT, B.S.
ΦX

VICTOR HOWARD HAAS, B.M.
NΣN
Student Council.

ADELIA M. HANKS, B.S.
ΑΟΠ, THE
H. Ad. Club, Treasurer 4.

ERLE A. HANSON, Com. E.
ΣX, ΣΣ
Men's Glee Club; University News 4, 5; Junior Prom Comm.; Co-op Dance Comm.; Co-op Day Comm.; Engineering Tribunal 3, 4; Co-op Stag Comm.; Co-op Senate; Musical Comedy Production Comm.; Fresh Painters, President 5.



OTTO GUTENSON, M.E.

RAYMOND H. HAFER, Cert. in Accounting
Evening Commerce Club.

WALTER B. HANSMANN, Cert. in Traffic Management

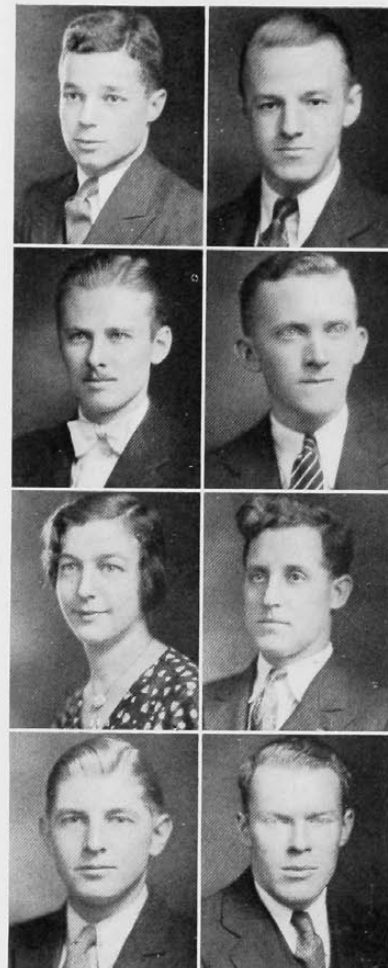
JACK W. HARDIE, C.E.

SARAH HELEN HARRIS, A.B.
AKA
Inter-racial Club; Y. W. C. A.

JANE HARSHBARGER, B.S.
ΑXΩ
H. Ad. Club; Aspirants; Junior Adviser; Women's Panhellenic Association; Y. W. C. A.

MILDRED E. HARTSOCK, A.B.

FERDINAND RICHARD HAUBER, C.E.
Braune Civils.



MYRREL H. HARRISSON, B.S.
ZTA
Applied Arts Club; Varsity Art Club; Applied Arts Tribunal; Co-op Club; Y. W. C. A.

HERMINE ELIZABETH HARTE, B.S.
ΑXΩ
Kindergarten Club; Girls' Glee Club; Varsity Art Club; Freshman "Y" Cabinet; Women's Vigilance Comm.

ELEANOR HATTON, B.S.
ΘΠ
H. Ad. Club; Y. W. C. A.

KATHRYN HECKLE, B.S.
ΘΦA
Y. W. C. A.; Newman Club; Applied Arts Club; Junior Show; League of Women Voters.