

Nineteen-Thirty-One

LLOYD KEYS,
Cert. in Accounting

MARGARET KIESSLING,
Cert. in Accounting

RIDLON M. KIPHART,
Cert. in Marketing
Evening Commerce Club; University
News Staff.

CARL KISKER,
IXE, ΔΣΠ Com. E.
Musical Comedy 3.

RUTH KIDNEY,
Cert. in Journalism

RUSSELL E. KINSEY,
ΦΡΣ B.M.

FLORENCE E. KIRKPATRICK,
KΑΘ B.S.

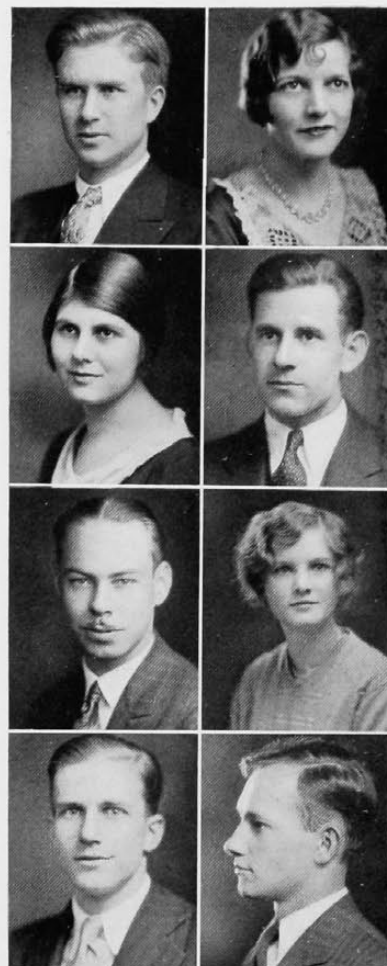
H. EDWARD KLEINE,
BK, ΔΘΦ LL.B.
Men's Glee Club 1, 2, 3, 4; Cynic
Staff 1, 2; University News Staff 2,
3; Musical Comedy 3; Baseball 5, 6.

ROGER KLOMAIN,
LL.B.

ELEANOR C. KNOECHEL,
ΑΔΘ, ΧΔΦ A.B.
Paleolinguists 1; Varsity Art Club
1, 2, 3; Girls' Glee Club, Sec. 4;
Greek Games.

PATRICIA KOTTE,
ΘΦΑ B.S.
H. Ad. Club; Y. W. C. A.; New-
man Club; Junior Show.

ANTHONY KRANES,
Cert. in Credits
Cert. in Collections
Evening Commerce Club.



E. GARRETT KNOBLOCH,
ΗΚΑ Com. E.

JOHN E. KOEHLER,
Cert. in Accounting

FRED KOTTE,
BK, ΦΔΦ, ΤΚΑ A.B.
Debating Team; Mummies.

MITCHELL A. KREINDLER,
Menorah Society. E.E.

