

## Nineteen-Thirty-One

MILDRED MERRILL PERRY,  
A.B.  
International Relations Club; Y. W.  
C. A.; Spanish Club; Greek Games.

GEORGE H. PETTIBONE,  
E.E.

MELBA B. PHILLIPS,  
A.B.  
*AXΩ, ΦBK, XΔΦ*  
Y. W. C. A.; W. S. G. A.; Vice-  
Pres. League of Women Voters 2;  
Secretary Freshman Class; Greek  
Games; Aspirants 1, 2; Soph Hop  
Comm.; Homecoming Comm. 2;  
Sociology Club, Pres. 4; Musical  
Comedy 3, 4; Fresh Painters 3, 4.

GEORGE FLEISCHER PLATTS,  
E.E.  
A.I.E.E.; Co-op Club.

RUTH M. PETERS,  
*XΩ*  
A.B.

VIRGINIA JUNE PETTIT,  
*Areté*  
B.S.  
W. A. A. Board 2, 3, 4; Women's  
Vigilance Comm.

THOMAS C. PIERSON,  
*ΔTA, ΦAA*  
A.B.  
Cincinnatian Staff 1, 2, 4.

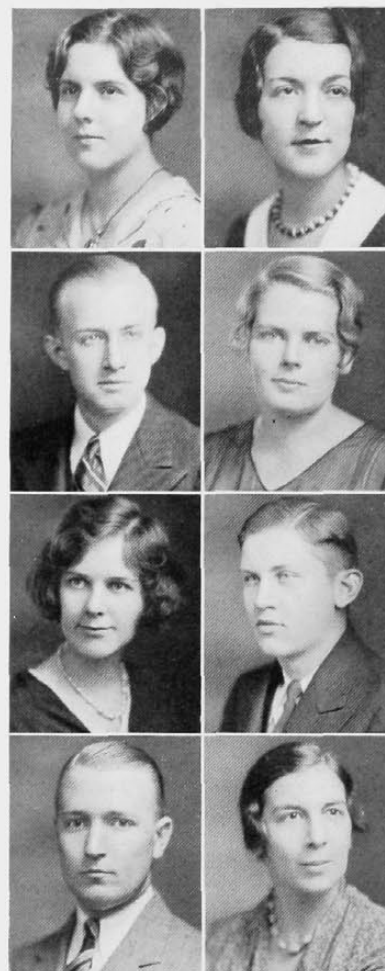
PESSA POLASKY,  
*ΦΣΣ, THE*  
B.S.  
Household Ad. Club; Greek Games.

WILLIAM C. POPP,  
Com. E.  
*ΔXA, OAK, Ulex*  
Men's Glee Club 1, 5; Musical Com-  
edy 1; "C" Club; Track 2, 3, 4;  
Basketball 2, 3, Capt. 4; Pres. So-  
phomore Class; Soph Hop Comm.;  
Student Council 2, 4.

EARL POWERS,  
*ΦX*  
B.M.

IRMA M. PUSHIN,  
*ΣΔT*  
A.B.  
Women's Panhellenic Assn.

ALBERT RAUH,  
*ΦBK*  
A.B.



HARRY L. PORTER,  
*ΣX, L'Atelier*  
B.S.  
"C" Club; Senior Football Mgr. 4;  
Applied Arts Tribunal, Pres. 5;  
Student Council 5; Exec. Board of  
Student Council 5; Track Team 4,  
5; Freshman "Y" Cabinet.

HELEN JUNE PUHL,  
Applied Arts Club.  
B.S.

HARRY E. RABE,  
*A. C. C., ΦBK*  
A.B.  
Y. M. C. A.; "Y" Handbook Staff 2,  
3; "Y" Cabinet 4; International Re-  
lations Club 2, 3, 4; Newman Club  
3, 4; Men's Glee Club; Musical  
Comedy 3; Cincinnatian Staff 3.

OMA VIRGINIA REDWINE,  
Y. W. C. A.; Melody Club.  
R.N.

