

Nineteen-Thirty-One

HELEN LYNN ROEMER, B.S.
XQ
Musical Comedy.

WALTER W. ROGERS, B.S.
Orchestra 2, 3.

ELMER H. ROMER, LL.B.
ΦΑΑ

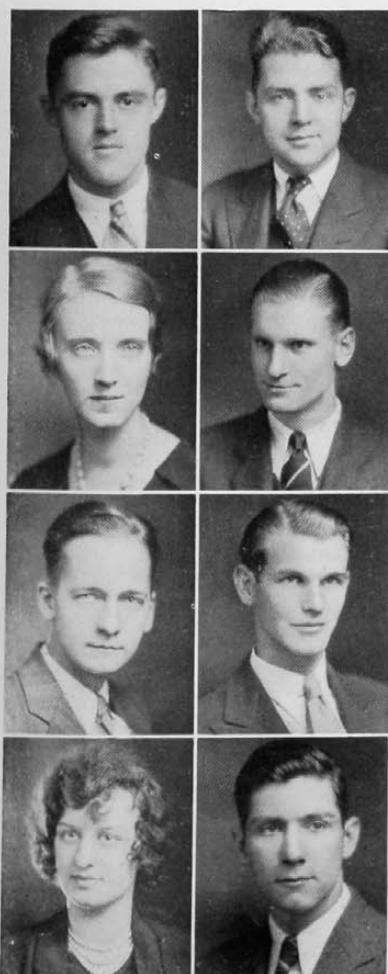
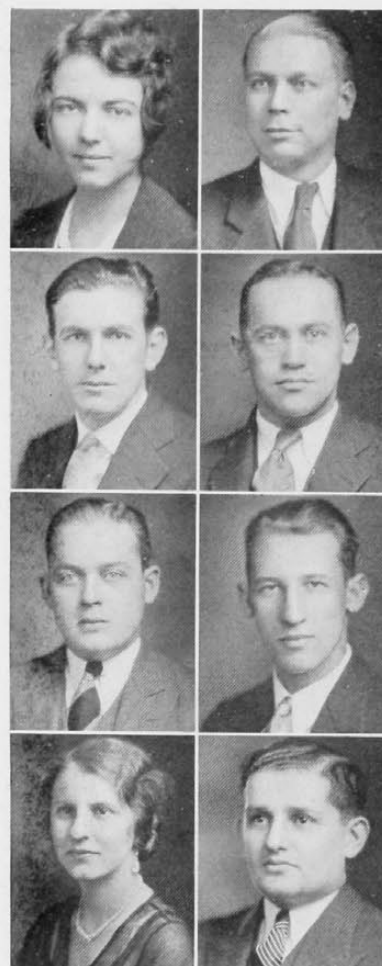
SARAH L. ROSENBERG, B.S.

GEORGE H. ROGERS, LL.B.
ATΩ, ΦΔΦ

SAMUEL ROCOFF, Com. E.
ΦΒΔ

EDWIN ROSE, C.E.
TBH
Braune Civils.

SAMUEL ROSENSTEIN, LL.B.



BEN M. ROSS, E.E.
HKN, TBH

JANE K. ROSS, A.B.
KKT, XΔΦ

CARL ROUSH, B.S.
NΣN

ALINE ELIZABETH RUST, A.B.
AΔΘ, HΣΦ
Paleolinguists; President 4; Y. W.
C. A.; L. A. Tribunal.

MONETTE ROSS, Com. E.
ΣΔP

LOUIS A. ROTH, B.S.
ΦEK

THOMAS A. RUSHMORE, B.S.
Triangle, L'Atelier
Varsity Art Club; Rifle Team; Ca-
det Officer.

FRANK GERALD SANNING, E.E.
Newman Club; A.I.E.E.