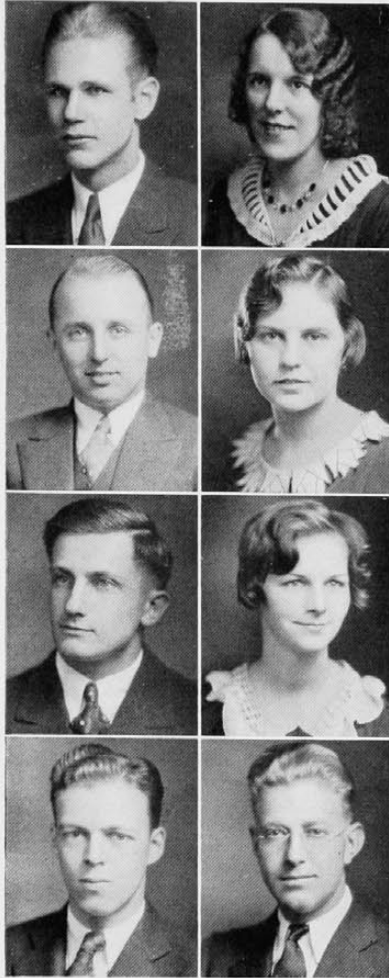


*The Cincinnati*



EDWIN C. SCHADEWALD,  
Com. E.  
Dormitory Council 2, 3, 4.

GLENN SCHIERING,  
Com. E.

C. OSCAR SCHMIDT, JR.,  
M.E.  
A.S.M.E.; Co-op Club.

CARL SCHMUELLING,  
B.S.  
*Scarab*

FLORA D. SCHIERENBECK,  
Cert. in Real Estate

ANN JOY SCHIFF,  
A.B.

RUTH M. SCHMIDT,  
B.S.  
*ΑΓΔ, Αρετή*  
Spanish Club 1, 2; Girls' Glee Club;  
Musical Comedy; Hockey 1, 2, 3, 4;  
Basketball 1, 2, 3, 4; Baseball 1, 2,  
3, 4.

C. P. SCHNEIDER,  
M.E.  
*Scabbard and Blade*  
A.S.M.E.; Co-op Club.

CLARENCE SCHOOLFIELD,  
B.S.  
*ΝΣΝ*

VERNA SCHUMAKER,  
Com. E.  
*ΑΔΘ, ΗΧΕ*  
Co-op Engineer Staff 3, 4; Sec'y-  
Treas. Women's Engineering Tribu-  
nal 3; Chairman Co-op Banquet 3;  
Co-op Day Comm.; Sec'y-Treas. Co-  
op Club 4; Sec'y Engineering Tribu-  
nal 4, 5.

ROBERT JOHN SCHWARZ,  
LL.B.  
*ΣΝ*

SIDNEY WILLIAM SCORSE,  
B.M.  
*ΦΡΣ*

MAURICE SCHULZINGER,  
B.S.  
*L'Atelier*  
Applied Arts Club.

G. OSCAR SCHUSTER,  
Aero. E.  
Aeronautics Club; Co-op Engineer  
Staff; News Staff.

HENRY J. SCHWEGLER,  
B.S.  
*ΦΕΚ*

GLENN E. SCOTT,  
A.B.  
*ΣΧ, ΟΔΚ, ΗΔΕ*  
Bag and Hammer 2, 3, 4; L. A.  
Tribunal, Vice-Pres. 3; University  
News Staff 3, 4; Mummies Board;  
Mummies 2, 3, 4, Pres. 4; "C"  
Club; Tennis Manager 3; "Y" Cab-  
inet; Chairman O. C. N. A. Conven-  
tion 4.

